



[Go to Product page](#)

Datasheet for ABIN1345940

ATF5 Protein (AA 101-200) (GST tag)

1 Image

Overview

Quantity:	10 µg
Target:	ATF5
Protein Characteristics:	AA 101-200
Origin:	Human
Source:	Wheat germ
Protein Type:	Recombinant
Purification tag / Conjugate:	This ATF5 protein is labelled with GST tag.
Application:	ELISA, Western Blotting (WB), Antibody Array (AA), Affinity Purification (AP)

Product Details

Purpose:	ATF5 (Human) Recombinant Protein (Q01)
Sequence:	MASLLKKELE QMEDFFLDAP LLPPSPPPPL PPPPLPPAPS LPLSLPSFDL PQPPVLDTLTLD LLAIYCRNEA GQEEVGMPPPL PPPQPPPPPS PPQPSRLAPY
Characteristics:	Human ATF5 partial ORF (AAH05174.1, 101 a.a. - 200 a.a.) recombinant protein with GST-tag at N-terminal.
Purification:	in vitro wheat germ expression system

Target Details

Target:	ATF5
Alternative Name:	ATF5 (ATF5 Products)

Target Details

Background: Full Gene Name: activating transcription factor 5
Synonyms: ATFX,FLJ34666,HMFN0395

Gene ID: 22809

Pathways: [Myometrial Relaxation and Contraction](#)

Application Details

Application Notes: Optimal working dilution should be determined by the investigator.

Comment: Preparation method: in vitro, wheat germ expression system
Product Quality tested by: 12.5% SDS-PAGE Stained with Coomassie Blue.

Restrictions: For Research Use only

Handling

Buffer: 50 mM Tris-HCl, 10 mM reduced Glutathione, pH =8.0 in the elution buffer.

Handling Advice: Aliquot to avoid repeated freezing and thawing.

Storage: -80 °C

Storage Comment: Best use within three months from the date of receipt of this protein.

Images

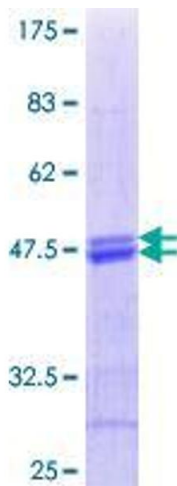


Image 1.