



[Go to Product page](#)

Datasheet for ABIN1345962

ATG16L1 Protein (AA 1-523) (GST tag)

1 Image

Overview

| | |
|-------------------------------|---|
| Quantity: | 2 µg |
| Target: | ATG16L1 |
| Protein Characteristics: | AA 1-523 |
| Origin: | Human |
| Source: | Wheat germ |
| Protein Type: | Recombinant |
| Purification tag / Conjugate: | This ATG16L1 protein is labelled with GST tag. |
| Application: | Western Blotting (WB), ELISA, Antibody Array (AA), Affinity Purification (AP) |

Product Details

Sequence: MAQLRIKHQE ELTELHKKRG ELAQLVIDLN NQMQRKDREM QMNEAKIAEC LQTISDLETE
CLDLRRTLKCD LERANQTLKD EYDALQITFT ALEGKLRKTT EENQELVTRW MAEKAQEANR
LNAENEKDSR RRQARLQKEL AEAAKEPLPV EQDDDIEVIV DETSDHTEET SPVRAISRAA
TKRLSQPAGG LLDSITNIFG RRSVSSFPVP QDNVDTHPGS GKEVRVPATA LCVFDAHDGE
VNAVQFSPGS RLLATGGMDR RVKLWEVFG E KCEF KGSLSG SNAGITSIEF DSAGSYLLAA
SNDFASRIWT VDDYRLRHTL TGHSGKVL SA KFLLDNARIV SGSHDR TLKL WDLRSKVCIK
TVFAGSSCND IVCTEQCVMS GHFDKKIRFW DIRSESIVRE MELLGKITAL DLNPERTELL
SCSRDDLK V IDLRTNAIKQ TFSAPGFKCG SDWTRVVFSP DGSYVAAGSA EGS LYIWSVL
TGKVEKVL SK QHSSSINAVA WSPSGSHVVS VDKGCKAVLW AQY

Target Details

| | |
|---------|---------|
| Target: | ATG16L1 |
|---------|---------|

Target Details

| | |
|-------------------|--|
| Alternative Name: | ATG16L1 (ATG16L1 Products) |
| Background: | Full Gene Name: ATG16 autophagy related 16-like 1 (S. cerevisiae) Synonyms: APG16L,ATG16L,FLJ00045,FLJ10035,FLJ10828,FLJ22677,IBD10,WDR30 |
| Gene ID: | 55054 |
| NCBI Accession: | NP_110430 |
| Pathways: | Autophagy |

Application Details

| | |
|--------------------|--|
| Application Notes: | Optimal working dilution should be determined by the investigator. |
| Comment: | Preparation method: in vitro, wheat germ expression system Product Quality tested by: 12.5% SDS-PAGE Stained with Coomassie Blue. |
| Restrictions: | For Research Use only |

Handling

| | |
|------------------|---|
| Buffer: | 50 mM Tris-HCl, 10 mM reduced Glutathione, pH =8.0 in the elution buffer. |
| Handling Advice: | Aliquot to avoid repeated freezing and thawing. |
| Storage: | -80 °C |
| Storage Comment: | Store at -80 °C. Aliquot to avoid repeated freezing and thawing. |
| Expiry Date: | 3 months |

Images

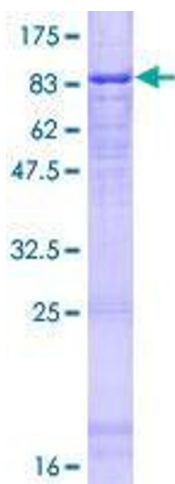


Image 1.