



[Go to Product page](#)

Datasheet for ABIN1345964

ATG16L1 Protein (AA 459-541) (GST tag)

1 Image

Overview

Quantity:	10 µg
Target:	ATG16L1
Protein Characteristics:	AA 459-541
Origin:	Human
Source:	Wheat germ
Protein Type:	Recombinant
Purification tag / Conjugate:	This ATG16L1 protein is labelled with GST tag.
Application:	Western Blotting (WB), ELISA, Antibody Array (AA), Affinity Purification (AP)

Product Details

Purpose:	ATG16L1 (Human) Recombinant Protein (Q01)
Sequence:	SGKVLSAKFL LDNARIVSGS HDRTLKLDL RSKVCIKTVF AGSSCNDIVC TEQCVMSRHF DKKIRFWDIR SESIVREMEL LGK
Characteristics:	Human ATG16L1 partial ORF (-, 459 a.a. - 541 a.a.) recombinant protein with GST-tag at N-terminal.
Purification:	in vitro wheat germ expression system

Target Details

Target:	ATG16L1
Alternative Name:	ATG16L1 (ATG16L1 Products)

Target Details

Background:	Full Gene Name: ATG16 autophagy related 16-like 1 (<i>S. cerevisiae</i>) Synonyms: APG16L,ATG16L,FLJ00045,FLJ10035,FLJ10828,FLJ22677,IBD10,WDR30
Gene ID:	55054
Pathways:	Autophagy

Application Details

Application Notes:	Optimal working dilution should be determined by the investigator.
Comment:	Preparation method: in vitro, wheat germ expression system Product Quality tested by: 12.5% SDS-PAGE Stained with Coomassie Blue.
Restrictions:	For Research Use only

Handling

Buffer:	50 mM Tris-HCl, 10 mM reduced Glutathione, pH =8.0 in the elution buffer.
Handling Advice:	Aliquot to avoid repeated freezing and thawing.
Storage:	-80 °C
Storage Comment:	Best use within three months from the date of receipt of this protein.

Images

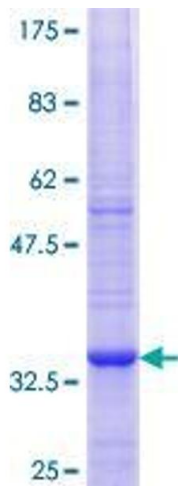


Image 1.