



[Go to Product page](#)

Datasheet for ABIN1345966

## ATG3 Protein (AA 1-314) (GST tag)

### 1 Image

#### Overview

Quantity:	10 µg
Target:	ATG3
Protein Characteristics:	AA 1-314
Origin:	Human
Source:	Wheat germ
Protein Type:	Recombinant
Purification tag / Conjugate:	This ATG3 protein is labelled with GST tag.
Application:	ELISA, Western Blotting (WB), Antibody Array (AA), Affinity Purification (AP)

#### Product Details

Purpose:	ATG3 (Human) Recombinant Protein (P01)
Sequence:	<p>MQNVINTVKG KALEVAEYLT PVLKESKFKE TGVITPEEFV AAGDHLVHHC PTWQWATGEE LKVKAYLPTG KQFLVTKNVP CYKRCKQMEY SDELEAIIIE DDGDGGWVDT YHNTGITGIT EAVKEITLEN KDNIRLQDCS ALCEEEEEDED EGAAADMEEY EESGLLETDE ATLDTRKIVE ACKAKTDAGG EDAILQTRTY DLYITYDKYY QTPRLWLFY DEQRQPLTVE HMYEDISQDH VKKTVTIENH PHLPPPMCS VHPCRHAEMV KKIIETVAEG GGELGVHMYL LIFLKFVQAV IPTIEYDYTR HFTM</p>
Characteristics:	Human ATG3 full-length ORF ( NP_071933.2, 1 a.a. - 314 a.a.) recombinant protein with GST-tag at N-terminal.
Purification:	in vitro wheat germ expression system

## Target Details

Target:	ATG3
Alternative Name:	ATG3 ( <a href="#">ATG3 Products</a> )
Background:	Full Gene Name: ATG3 autophagy related 3 homolog (S. cerevisiae) Synonyms: APG3,APG3-LIKE,APG3L,DKFZp564M1178,FLJ22125,MGC15201,PC3-96
Gene ID:	64422
NCBI Accession:	<a href="#">NM_022488</a>
Pathways:	<a href="#">Autophagy</a>

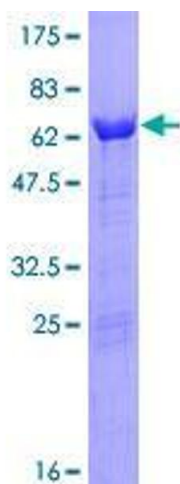
## Application Details

Application Notes:	Optimal working dilution should be determined by the investigator.
Comment:	Preparation method: in vitro, wheat germ expression system Product Quality tested by: 12.5% SDS-PAGE Stained with Coomassie Blue.
Restrictions:	For Research Use only

## Handling

Buffer:	50 mM Tris-HCl, 10 mM reduced Glutathione, pH =8.0 in the elution buffer.
Handling Advice:	Aliquot to avoid repeated freezing and thawing.
Storage:	-80 °C
Storage Comment:	Best use within three months from the date of receipt of this protein.

## Images



**Image 1.**