



[Go to Product page](#)

Datasheet for ABIN1345968

ATG3 Protein (AA 1-100) (GST tag)

1 Image

Overview

Quantity:	10 µg
Target:	ATG3
Protein Characteristics:	AA 1-100
Origin:	Human
Source:	Wheat germ
Protein Type:	Recombinant
Purification tag / Conjugate:	This ATG3 protein is labelled with GST tag.
Application:	ELISA, Western Blotting (WB), Antibody Array (AA), Affinity Purification (AP)

Product Details

Purpose:	APG3L (Human) Recombinant Protein (Q01)
Sequence:	MQNVINTVKG KALEVAEYLT PVLKESKFKE TGVITPEEFV AAGDHLVHHC PTWQWATGEE LKVKAYLPTG KQFLVTKNVP CYKRCKQMEY SDELEAIIIE
Characteristics:	Human APG3L partial ORF (NP_071933, 1 a.a. - 100 a.a.) recombinant protein with GST-tag at N-terminal.
Purification:	in vitro wheat germ expression system

Target Details

Target:	ATG3
Alternative Name:	ATG3 (ATG3 Products)

Target Details

Background:	Full Gene Name: ATG3 autophagy related 3 homolog (<i>S. cerevisiae</i>) Synonyms: APG3,APG3-LIKE,APG3L,DKFZp564M1178,FLJ22125,MGC15201,PC3-96
Gene ID:	64422
NCBI Accession:	NM_022488
Pathways:	Autophagy

Application Details

Application Notes:	Optimal working dilution should be determined by the investigator.
Comment:	Preparation method: in vitro, wheat germ expression system Product Quality tested by: 12.5% SDS-PAGE Stained with Coomassie Blue.
Restrictions:	For Research Use only

Handling

Buffer:	50 mM Tris-HCl, 10 mM reduced Glutathione, pH =8.0 in the elution buffer.
Handling Advice:	Aliquot to avoid repeated freezing and thawing.
Storage:	-80 °C
Storage Comment:	Best use within three months from the date of receipt of this protein.

Images

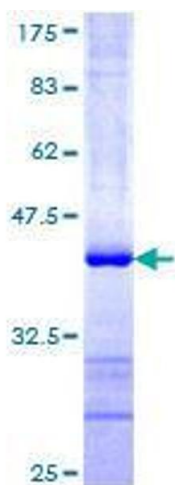


Image 1.