



[Go to Product page](#)

Datasheet for ABIN1345976

## ATG4D Protein (AA 1-141) (GST tag)

### 1 Image

#### Overview

|                               |   |
|-------------------------------|---|
| Quantity:                     | 10 µg   |
| Target:                       | ATG4D   |
| Protein Characteristics:      | AA 1-141  |
| Origin:                       | Human   |
| Source:                       | Wheat germ  |
| Protein Type:                 | Recombinant   |
| Purification tag / Conjugate: | This ATG4D protein is labelled with GST tag.                                  |
| Application:                  | ELISA, Western Blotting (WB), Antibody Array (AA), Affinity Purification (AP) |

#### Product Details

|                  |   |
|------------------|---|
| Purpose:         | ATG4D (Human) Recombinant Protein (P01)   |
| Sequence:        | MGGKPRHSLY FIGYQDDFLL YLDPHYCQPT VDVSQADFPL ESFHCTSPRK MAFKMDPSC<br>TVGFYAGDRK EFETLCSELT RVLSSSSATE RYPMFTLAEG HAQDHSLDDL CSQLAQPTLR<br>LPRTGRLLRA KRPSSSEDFVF L |
| Characteristics: | Human ATG4D full-length ORF ( AAH07639.1, 1 a.a. - 141 a.a.) recombinant protein with GST-tag at N-terminal.  |
| Purification:    | in vitro wheat germ expression system   |

#### Target Details

|                   |  |
|-------------------|--|
| Target:           | ATG4D                                    |
| Alternative Name: | ATG4D ( <a href="#">ATG4D Products</a> ) |

## Target Details

|             |   |
|-------------|---|
| Background: | Full Gene Name: ATG4 autophagy related 4 homolog D ( <i>S. cerevisiae</i> )<br>Synonyms: APG4-D,APG4D,AUTL4 |
| Gene ID:    | 84971   |
| Pathways:   | <a href="#">Autophagy</a>   |

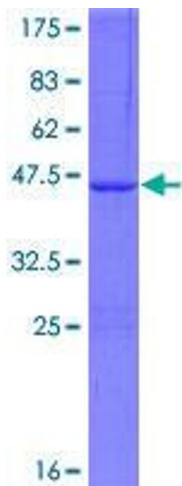
## Application Details

|                    |  |
|--------------------|--|
| Application Notes: | Optimal working dilution should be determined by the investigator.   |
| Comment:           | Preparation method: in vitro, wheat germ expression system<br>Product Quality tested by: 12.5% SDS-PAGE Stained with Coomassie Blue. |
| Restrictions:      | For Research Use only  |

## Handling

|                  |   |
|------------------|---|
| Buffer:          | 50 mM Tris-HCl, 10 mM reduced Glutathione, pH =8.0 in the elution buffer. |
| Handling Advice: | Aliquot to avoid repeated freezing and thawing.                           |
| Storage:         | -80 °C  |
| Storage Comment: | Best use within three months from the date of receipt of this protein.    |

## Images



**Image 1.**