



[Go to Product page](#)

Datasheet for ABIN1345994

## ATM Protein (AA 1-138) (GST tag)

### 1 Image

#### Overview

Quantity:	10 µg
Target:	ATM
Protein Characteristics:	AA 1-138
Origin:	Human
Source:	Wheat germ
Protein Type:	Recombinant
Purification tag / Conjugate:	This ATM protein is labelled with GST tag.
Application:	Western Blotting (WB), Antibody Array (AA), Affinity Purification (AP), ELISA

#### Product Details

Purpose:	ATM (Human) Recombinant Protein (P01)
Sequence:	MTLHEPANSS ASQSTDLCDF SGLDLPAPNP PHFPSHWVKA TFAYISNCHK TKLKSILEIL SKSPDSYQKI LLAICEQAAE TNNVYKKHRI LKIYHLFVSL LLKDIKSLG GAWAFVLRDV IYTLIHYINQ RKLTIIFSQ
Characteristics:	Human ATM full-length ORF (AAH07023.1, 1 a.a. - 138 a.a.) recombinant protein with GST-tag at N-terminal.
Purification:	in vitro wheat germ expression system

#### Target Details

Target:	ATM
Alternative Name:	ATM ( <a href="#">ATM Products</a> )

## Target Details

Background:	Full Gene Name: ataxia telangiectasia mutated Synonyms: AT1,ATA,ATC,ATD,ATDC,ATE,DKFZp781A0353,MGC74674,TEL1,TELO1
Gene ID:	472
Pathways:	<a href="#">p53 Signaling</a> , <a href="#">Apoptosis</a> , <a href="#">DNA Damage Repair</a> , <a href="#">Inositol Metabolic Process</a> , <a href="#">Positive Regulation of Response to DNA Damage Stimulus</a>

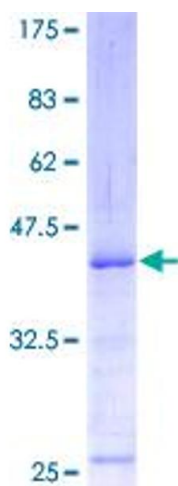
## Application Details

Application Notes:	Optimal working dilution should be determined by the investigator.
Comment:	Preparation method: in vitro, wheat germ expression system Product Quality tested by: 12.5% SDS-PAGE Stained with Coomassie Blue.
Restrictions:	For Research Use only

## Handling

Buffer:	50 mM Tris-HCl, 10 mM reduced Glutathione, pH =8.0 in the elution buffer.
Handling Advice:	Aliquot to avoid repeated freezing and thawing.
Storage:	-80 °C
Storage Comment:	Best use within three months from the date of receipt of this protein.

## Images



**Image 1.**