



Datasheet for ABIN1346004

ATOH1 Protein (AA 266-354) (GST tag)



[Go to Product page](#)

1 Image

Overview

Quantity:	10 µg
Target:	ATOH1
Protein Characteristics:	AA 266-354
Origin:	Human
Source:	Wheat germ
Protein Type:	Recombinant
Purification tag / Conjugate:	This ATOH1 protein is labelled with GST tag.
Application:	ELISA, Western Blotting (WB), Antibody Array (AA), Affinity Purification (AP)

Product Details

Sequence:	PTPPGSCRTR FSAPASAGGY SVQLDALHFS TFEDSALTAM MAQKNLSPSL PGSILQPVQE ENSKTSPRSH RSDGEFSPHS HYSDESDEAS
-----------	---

Target Details

Target:	ATOH1
Alternative Name:	ATOH1 (ATOH1 Products)
Background:	Full Gene Name: atonal homolog 1 (Drosophila) Synonyms: ATH1,HATH1,MATH-1,bHLHa14
Gene ID:	474
NCBI Accession:	NP_005163 , NM_005172

Application Details

Application Notes:	Optimal working dilution should be determined by the investigator.
Comment:	Preparation method: in vitro, wheat germ expression system Product Quality tested by: 12.5% SDS-PAGE Stained with Coomassie Blue.
Restrictions:	For Research Use only

Handling

Buffer:	50 mM Tris-HCl, 10 mM reduced Glutathione, pH =8.0 in the elution buffer.
Handling Advice:	Aliquot to avoid repeated freezing and thawing.
Storage:	-80 °C
Storage Comment:	Store at -80 °C. Aliquot to avoid repeated freezing and thawing.
Expiry Date:	3 months

Images

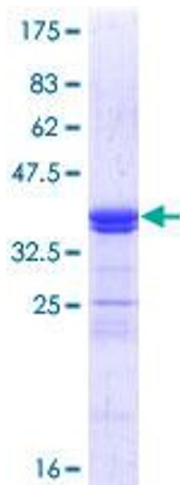


Image 1.