



[Go to Product page](#)

Datasheet for ABIN1346016

ATP13A2 Protein (AA 68-154) (GST tag)

1 Image

Overview

Quantity:	10 µg
Target:	ATP13A2
Protein Characteristics:	AA 68-154
Origin:	Human
Source:	Wheat germ
Protein Type:	Recombinant
Purification tag / Conjugate:	This ATP13A2 protein is labelled with GST tag.
Application:	ELISA, Western Blotting (WB), Antibody Array (AA), Affinity Purification (AP)

Product Details

Sequence: KPLWGVRLRL RPCNLAHAET LVIEIRDKED SSWQLFTVQV QTEAIGEGSL EPSPQQAED
GRSQAAVGAV PEGAWKDTAQ LHKSEEA

Target Details

Target:	ATP13A2
Alternative Name:	ATP13A2 (ATP13A2 Products)
Background:	Full Gene Name: ATPase type 13A2 Synonyms: FLJ26510,HSA9947,KRPPD,PARK9
Gene ID:	23400
NCBI Accession:	NP_071372 , NM_022089

Target Details

Pathways: [Ribonucleoside Biosynthetic Process](#)

Application Details

Application Notes: Optimal working dilution should be determined by the investigator.

Comment: Preparation method: in vitro, wheat germ expression system
Product Quality tested by: 12.5% SDS-PAGE Stained with Coomassie Blue.

Restrictions: For Research Use only

Handling

Buffer: 50 mM Tris-HCl, 10 mM reduced Glutathione, pH =8.0 in the elution buffer.

Handling Advice: Aliquot to avoid repeated freezing and thawing.

Storage: -80 °C

Storage Comment: Store at -80 °C. Aliquot to avoid repeated freezing and thawing.

Expiry Date: 3 months

Images

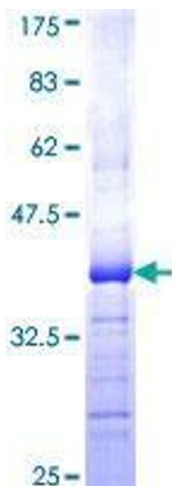


Image 1.