



[Go to Product page](#)

Datasheet for ABIN1346056

## ATP5E Protein (AA 1-51) (GST tag)

### 1 Image

#### Overview

Quantity:	10 µg
Target:	ATP5E
Protein Characteristics:	AA 1-51
Origin:	Human
Source:	Wheat germ
Protein Type:	Recombinant
Purification tag / Conjugate:	This ATP5E protein is labelled with GST tag.
Application:	ELISA, Western Blotting (WB), Antibody Array (AA), Affinity Purification (AP)

#### Product Details

Purpose:	ATP5E (Human) Recombinant Protein (P01)
Sequence:	MVAYWRQAGL SYIRYSQICA KAVRDALKTE FKANAECTSG SNVKIVKVKK E
Characteristics:	Human ATP5E full-length ORF ( AAH01690, 1 a.a. - 51 a.a.) recombinant protein with GST-tag at N-terminal.
Purification:	in vitro wheat germ expression system

#### Target Details

Target:	ATP5E
Alternative Name:	ATP5E ( <a href="#">ATP5E Products</a> )
Background:	Full Gene Name: ATP synthase, H+ transporting, mitochondrial F1 complex, epsilon subunit

## Target Details

Synonyms: ATPE,MGC104243

Gene ID: 514

Pathways: [Proton Transport](#), [Ribonucleoside Biosynthetic Process](#)

## Application Details

Application Notes: Optimal working dilution should be determined by the investigator.

Comment: Preparation method: in vitro, wheat germ expression system  
Product Quality tested by: 12.5% SDS-PAGE Stained with Coomassie Blue.

Restrictions: For Research Use only

## Handling

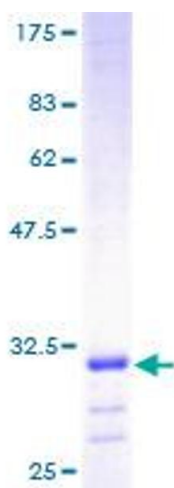
Buffer: 50 mM Tris-HCl, 10 mM reduced Glutathione, pH =8.0 in the elution buffer.

Handling Advice: Aliquot to avoid repeated freezing and thawing.

Storage: -80 °C

Storage Comment: Best use within three months from the date of receipt of this protein.

## Images



**Image 1.**