



[Go to Product page](#)

Datasheet for ABIN1346062

ATP5G1 Protein (AA 18-136) (GST tag)

1 Image

Overview

Quantity:	10 µg
Target:	ATP5G1
Protein Characteristics:	AA 18-136
Origin:	Human
Source:	Wheat germ
Protein Type:	Recombinant
Purification tag / Conjugate:	This ATP5G1 protein is labelled with GST tag.
Application:	ELISA, Western Blotting (WB), Antibody Array (AA), Affinity Purification (AP)

Product Details

Purpose:	ATP5G1 (Human) Recombinant Protein (P01)
Sequence:	TRGLIRPVSA SFLSSPVNSS KQPSYSNFPL QVARREFQTS VVSRDIDTAA KFIGAGAATV GVAGSGAGIG TVFGSLIIGY ARNPSLKQQL FSYAILGFAL SEAMGLFCLM VAFILIFAM
Characteristics:	Human ATP5G1 full-length ORF (AAH04963, 18 a.a. - 136 a.a.) recombinant protein with GST-tag at N-terminal.
Purification:	in vitro wheat germ expression system

Target Details

Target:	ATP5G1
Alternative Name:	ATP5G1 (ATP5G1 Products)

Target Details

Background:	Full Gene Name: ATP synthase, H ⁺ transporting, mitochondrial F0 complex, subunit C1 (subunit 9) Synonyms: ATP5A,ATP5G
Gene ID:	516
Pathways:	Proton Transport , Ribonucleoside Biosynthetic Process

Application Details

Application Notes:	Optimal working dilution should be determined by the investigator.
Comment:	Preparation method: in vitro, wheat germ expression system Product Quality tested by: 12.5% SDS-PAGE Stained with Coomassie Blue.
Restrictions:	For Research Use only

Handling

Buffer:	50 mM Tris-HCl, 10 mM reduced Glutathione, pH =8.0 in the elution buffer.
Handling Advice:	Aliquot to avoid repeated freezing and thawing.
Storage:	-80 °C
Storage Comment:	Best use within three months from the date of receipt of this protein.

Images

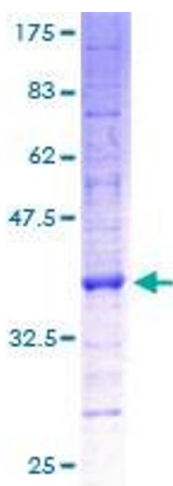


Image 1.