



[Go to Product page](#)

Datasheet for ABIN1346072

## ATP5I Protein (AA 1-69) (GST tag)

### 1 Image

#### Overview

Quantity:	10 µg
Target:	ATP5I
Protein Characteristics:	AA 1-69
Origin:	Human
Source:	Wheat germ
Protein Type:	Recombinant
Purification tag / Conjugate:	This ATP5I protein is labelled with GST tag.
Application:	ELISA, Western Blotting (WB), Antibody Array (AA), Affinity Purification (AP)

#### Product Details

Purpose:	ATP5I (Human) Recombinant Protein (P01)
Sequence:	MVPPVQVSPL IKLGRYSALF LGVAYGATRY NYLKPRAEER RRIAAEEKKK QDELKRIARE LAEDDSILK
Characteristics:	Human ATP5I full-length ORF ( AAH03679, 1 a.a. - 69 a.a.) recombinant protein with GST-tag at N-terminal.
Purification:	in vitro wheat germ expression system

#### Target Details

Target:	ATP5I
Alternative Name:	ATP5I ( <a href="#">ATP5I Products</a> )

## Target Details

Background:	Full Gene Name: ATP synthase, H <sup>+</sup> transporting, mitochondrial F0 complex, subunit E Synonyms: ATP5K,MGC12532
Gene ID:	521
Pathways:	<a href="#">Proton Transport</a> , <a href="#">Ribonucleoside Biosynthetic Process</a>

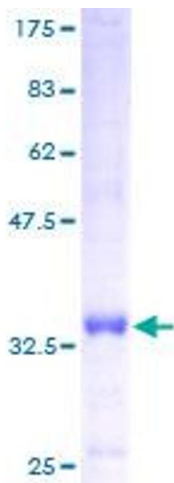
## Application Details

Application Notes:	Optimal working dilution should be determined by the investigator.
Comment:	Preparation method: in vitro, wheat germ expression system Product Quality tested by: 12.5% SDS-PAGE Stained with Coomassie Blue.
Restrictions:	For Research Use only

## Handling

Buffer:	50 mM Tris-HCl, 10 mM reduced Glutathione, pH =8.0 in the elution buffer.
Handling Advice:	Aliquot to avoid repeated freezing and thawing.
Storage:	-80 °C
Storage Comment:	Best use within three months from the date of receipt of this protein.

## Images



**Image 1.**