



[Go to Product page](#)

Datasheet for ABIN1346105

## ATP6V0D1 Protein (AA 238-308) (GST tag)

### 1 Image

#### Overview

Quantity:	10 µg
Target:	ATP6V0D1
Protein Characteristics:	AA 238-308
Origin:	Human
Source:	Wheat germ
Protein Type:	Recombinant
Purification tag / Conjugate:	This ATP6V0D1 protein is labelled with GST tag.
Application:	ELISA, Western Blotting (WB), Antibody Array (AA), Affinity Purification (AP)

#### Product Details

Sequence: AKLFPHCGRL YPEGLAQLAR ADDYEQVKNV ADYYPEYKLL FEGAGSNPGD KTLED RFFE H  
EVKLNKLAFL N

#### Target Details

Target:	ATP6V0D1
Alternative Name:	ATP6V0D1 ( <a href="#">ATP6V0D1 Products</a> )
Background:	Full Gene Name: ATPase, H <sup>+</sup> transporting, lysosomal 38 kDa, V0 subunit d1 Synonyms: ATP6D,ATP6DV,P39,VATX,VMA6,VPATPD
Gene ID:	9114
NCBI Accession:	<a href="#">NP_004682</a> , <a href="#">NM_004691</a>

## Target Details

---

Pathways: [Transition Metal Ion Homeostasis](#), [Proton Transport](#), [ER-Nucleus Signaling](#), [Unfolded Protein Response](#)

## Application Details

---

Application Notes: Optimal working dilution should be determined by the investigator.

Comment: Preparation method: in vitro, wheat germ expression system  
Product Quality tested by: 12.5% SDS-PAGE Stained with Coomassie Blue.

Restrictions: For Research Use only

## Handling

---

Buffer: 50 mM Tris-HCl, 10 mM reduced Glutathione, pH =8.0 in the elution buffer.

Handling Advice: Aliquot to avoid repeated freezing and thawing.

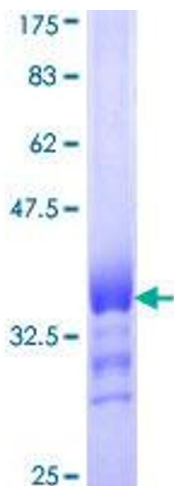
Storage: -80 °C

Storage Comment: Store at -80 °C. Aliquot to avoid repeated freezing and thawing.

Expiry Date: 3 months

## Images

---



**Image 1.**