



[Go to Product page](#)

Datasheet for ABIN1346107

## ATP6V0D2 Protein (AA 238-306) (GST tag)

### 1 Image

#### Overview

Quantity:	10 µg
Target:	ATP6V0D2
Protein Characteristics:	AA 238-306
Origin:	Human
Source:	Wheat germ
Protein Type:	Recombinant
Purification tag / Conjugate:	This ATP6V0D2 protein is labelled with GST tag.
Application:	ELISA, Western Blotting (WB), Antibody Array (AA), Affinity Purification (AP)

#### Product Details

Purpose:	ATP6V0D2 (Human) Recombinant Protein (Q01)
Sequence:	ETLYPTFGKL YPEGLRLLAQ AEDFDQMKNV ADHYGVYKPL FEAVGGSGGK TLEDVFYERE VQMNVLA FN
Characteristics:	Human ATP6V0D2 partial ORF ( NP_689778, 238 a.a. - 306 a.a.) recombinant protein with GST-tag at N-terminal.
Purification:	in vitro wheat germ expression system

#### Target Details

Target:	ATP6V0D2
Alternative Name:	ATP6V0D2 ( <a href="#">ATP6V0D2 Products</a> )

## Target Details

Background:	Full Gene Name: ATPase, H <sup>+</sup> transporting, lysosomal 38 kDa, V0 subunit d2 Synonyms: ATP6D2,FLJ38708,VMA6
Gene ID:	245972
NCBI Accession:	<a href="#">NM_152565</a>
Pathways:	<a href="#">Transition Metal Ion Homeostasis</a> , <a href="#">Proton Transport</a>

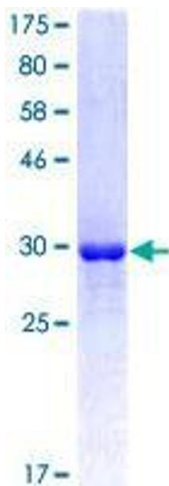
## Application Details

Application Notes:	Optimal working dilution should be determined by the investigator.
Comment:	Preparation method: in vitro, wheat germ expression system Product Quality tested by: 12.5% SDS-PAGE Stained with Coomassie Blue.
Restrictions:	For Research Use only

## Handling

Buffer:	50 mM Tris-HCl, 10 mM reduced Glutathione, pH =8.0 in the elution buffer.
Handling Advice:	Aliquot to avoid repeated freezing and thawing.
Storage:	-80 °C
Storage Comment:	Best use within three months from the date of receipt of this protein.

## Images



**Image 1.**