



[Go to Product page](#)

Datasheet for ABIN1346132

ATP6V1E1 Protein (AA 1-226) (GST tag)

1 Image

Overview

Quantity:	25 µg
Target:	ATP6V1E1
Protein Characteristics:	AA 1-226
Origin:	Human
Source:	Wheat germ
Protein Type:	Recombinant
Purification tag / Conjugate:	This ATP6V1E1 protein is labelled with GST tag.
Application:	ELISA, Western Blotting (WB), Antibody Array (AA), Affinity Purification (AP)

Product Details

Purpose:	ATP6V1E1 (Human) Recombinant Protein (P01)
Sequence:	MALSDADVQK QIKHMMAFIE QEANEKAEI DAKAEFEFNI EKGRLVQTQR LKIMEYYEKK EKQIEQQKKI QMSNLMNQAR LKVLRRADDL ITDLLNEAKQ RLSKVVKDIT RYQVLLDGLV LQGLYQLLEP RMIVRCRKQD FPLVKA AVQK AIPMYKIATK NDVDVQIDQE SYLPEDIAGG VEIYNGDRKI KVSNTLESRL DLIAQQMMPE VRGALFGANA NRKFLD
Characteristics:	Human ATP6V1E1 full-length ORF (AAH04443, 1 a.a. - 226 a.a.) recombinant protein with GST-tag at N-terminal.
Purification:	in vitro wheat germ expression system

Target Details

Target:	ATP6V1E1
---------	----------

Target Details

Alternative Name:	ATP6V1E1 (ATP6V1E1 Products)
Background:	Full Gene Name: ATPase, H ⁺ transporting, lysosomal 31 kDa, V1 subunit E1 Synonyms: ATP6E,ATP6E2,ATP6V1E,P31,Vma4
Gene ID:	529
Pathways:	Transition Metal Ion Homeostasis , Proton Transport

Application Details

Application Notes:	Optimal working dilution should be determined by the investigator.
Comment:	Preparation method: in vitro, wheat germ expression system Product Quality tested by: 12.5% SDS-PAGE Stained with Coomassie Blue.
Restrictions:	For Research Use only

Handling

Buffer:	50 mM Tris-HCl, 10 mM reduced Glutathione, pH =8.0 in the elution buffer.
Handling Advice:	Aliquot to avoid repeated freezing and thawing.
Storage:	-80 °C
Storage Comment:	Best use within three months from the date of receipt of this protein.

Images

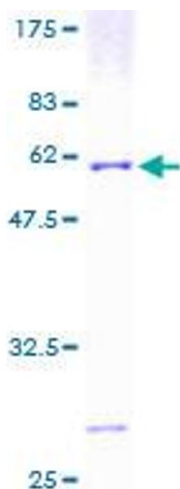


Image 1.