



[Go to Product page](#)

Datasheet for ABIN1346137

ATP6V1E2 Protein (AA 129-189) (GST tag)

1 Image

Overview

Quantity:	10 µg
Target:	ATP6V1E2
Protein Characteristics:	AA 129-189
Origin:	Human
Source:	Wheat germ
Protein Type:	Recombinant
Purification tag / Conjugate:	This ATP6V1E2 protein is labelled with GST tag.
Application:	ELISA, Western Blotting (WB), Antibody Array (AA), Affinity Purification (AP)

Product Details

Purpose:	ATP6V1E2 (Human) Recombinant Protein (Q01)
Sequence:	EPVMIVRCRP QDLLLVEAAV QKAIPEYMTI SQKHVEVQID KEAYLAVNAA GGVEVYSGNQ R
Characteristics:	Human ATP6V1E2 partial ORF (NP_542384, 129 a.a. - 189 a.a.) recombinant protein with GST-tag at N-terminal.
Purification:	in vitro wheat germ expression system

Target Details

Target:	ATP6V1E2
Alternative Name:	ATP6V1E2 (ATP6V1E2 Products)
Background:	Full Gene Name: ATPase, H+ transporting, lysosomal 31 kDa, V1 subunit E2

Target Details

Synonyms: ATP6E1,ATP6EL2,ATP6V1EL2,MGC9341,VMA4

Gene ID: 90423

NCBI Accession: [NM_080653](#)

Pathways: [Transition Metal Ion Homeostasis](#), [Proton Transport](#)

Application Details

Application Notes: Optimal working dilution should be determined by the investigator.

Comment: Preparation method: in vitro, wheat germ expression system
Product Quality tested by: 12.5% SDS-PAGE Stained with Coomassie Blue.

Restrictions: For Research Use only

Handling

Buffer: 50 mM Tris-HCl, 10 mM reduced Glutathione, pH =8.0 in the elution buffer.

Handling Advice: Aliquot to avoid repeated freezing and thawing.

Storage: -80 °C

Storage Comment: Best use within three months from the date of receipt of this protein.

Images

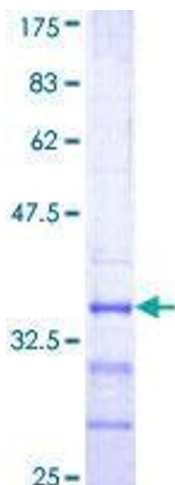


Image 1.