



[Go to Product page](#)

Datasheet for ABIN1346141

ATP6V1F Protein (AA 10-119) (GST tag)

1 Image

Overview

Quantity:	10 µg
Target:	ATP6V1F
Protein Characteristics:	AA 10-119
Origin:	Human
Source:	Wheat germ
Protein Type:	Recombinant
Purification tag / Conjugate:	This ATP6V1F protein is labelled with GST tag.
Application:	ELISA, Western Blotting (WB), Antibody Array (AA), Affinity Purification (AP)

Product Details

Purpose:	ATP6V1F (Human) Recombinant Protein (Q01)
Sequence:	VIGDEDTV TG FLLGGIGELN KNRHPNFLV V EKDTTINEIE DTFRQFLNRD DIGIILINQY IAEMVRHALD AHQQSIPAVL EIPSKHEPHYD AAKDSILRRA RGMFTAEDLR
Characteristics:	Human ATP6V1F partial ORF (NP_004222, 10 a.a. - 119 a.a.) recombinant protein with GST-tag at N-terminal.
Purification:	in vitro wheat germ expression system

Target Details

Target:	ATP6V1F
Alternative Name:	ATP6V1F (ATP6V1F Products)

Target Details

Background:	Full Gene Name: ATPase, H ⁺ transporting, lysosomal 14 kDa, V1 subunit F Synonyms: ATP6S14,MGC117321,MGC126037,MGC126038,VATF,Vma7
Gene ID:	9296
NCBI Accession:	NM_004231
Pathways:	Transition Metal Ion Homeostasis , Proton Transport

Application Details

Application Notes:	Optimal working dilution should be determined by the investigator.
Comment:	Preparation method: in vitro, wheat germ expression system Product Quality tested by: 12.5% SDS-PAGE Stained with Coomassie Blue.
Restrictions:	For Research Use only

Handling

Buffer:	50 mM Tris-HCl, 10 mM reduced Glutathione, pH =8.0 in the elution buffer.
Handling Advice:	Aliquot to avoid repeated freezing and thawing.
Storage:	-80 °C
Storage Comment:	Best use within three months from the date of receipt of this protein.

Images

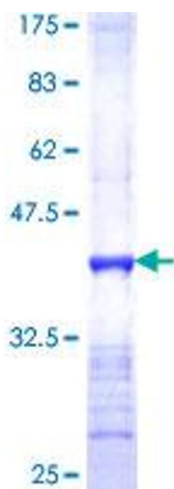


Image 1.