



[Go to Product page](#)

Datasheet for ABIN1346147

ATP6V1G2 Protein (AA 41-118) (GST tag)

1 Image

Overview

Quantity:	10 µg
Target:	ATP6V1G2
Protein Characteristics:	AA 41-118
Origin:	Human
Source:	Wheat germ
Protein Type:	Recombinant
Purification tag / Conjugate:	This ATP6V1G2 protein is labelled with GST tag.
Application:	ELISA, Western Blotting (WB), Antibody Array (AA), Affinity Purification (AP)

Product Details

Sequence: QMEVEQYRRE REHEFQSKQQ AAMGSQGNLS AEVEQATRRQ VQGMQSSQQR NRERVLAQLL
GMVCDVRPQV HPNYRISA

Target Details

Target:	ATP6V1G2
Alternative Name:	ATP6V1G2 (ATP6V1G2 Products)
Background:	Full Gene Name: ATPase, H ⁺ transporting, lysosomal 13 kDa, V1 subunit G2 Synonyms: ATP6G,ATP6G2,NG38,VMA10
Gene ID:	534
NCBI Accession:	NP_569730 , NM_130463

Target Details

Pathways: [Transition Metal Ion Homeostasis, Proton Transport](#)

Application Details

Application Notes: Optimal working dilution should be determined by the investigator.

Comment: Preparation method: in vitro, wheat germ expression system
Product Quality tested by: 12.5% SDS-PAGE Stained with Coomassie Blue.

Restrictions: For Research Use only

Handling

Buffer: 50 mM Tris-HCl, 10 mM reduced Glutathione, pH =8.0 in the elution buffer.

Handling Advice: Aliquot to avoid repeated freezing and thawing.

Storage: -80 °C

Storage Comment: Store at -80 °C. Aliquot to avoid repeated freezing and thawing.

Expiry Date: 3 months

Images

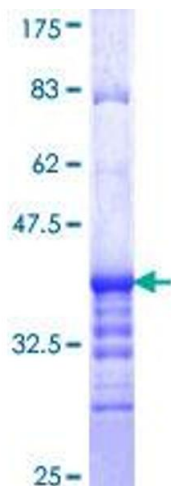


Image 1.