



[Go to Product page](#)

Datasheet for ABIN1346165

ATP9A Protein (AA 1-1047) (GST tag)

1 Image

Overview

Quantity:	25 µg
Target:	ATP9A
Protein Characteristics:	AA 1-1047
Origin:	Human
Source:	Wheat germ
Protein Type:	Recombinant
Purification tag / Conjugate:	This ATP9A protein is labelled with GST tag.
Application:	ELISA, Western Blotting (WB), Antibody Array (AA), Affinity Purification (AP)

Product Details

Purpose:	ATP9A (Human) Recombinant Protein (P01)
Sequence:	MTDNIPLQPV RQKKRMDSRP RAGCCEWLRC CGGGEARPRT VWLGHPEKRD QRYPRNVINN QKYNFFTFLLP GVLFNQFKYF FNLYFLLAC SQFVPEMRLG ALYTYWVPLG FVLAFTVIRE AVEEIRCYVR DKEVNSQVYS RLTARGETVKV KSSNIQVGD L IIVEKNQRVP ADMIFLRTSE KNGSCFLRTD QLDGETDWKL RLPVACTQRL PTAADLLQIR SYVYAEENI DIHNFVGTFT REDSPPISE SLSIENTLWA GTVVASGTVV GVVLYTGREL RSMNNTSNPR SKIGLFDLEV NCLTKILFGA LVVVSLVMVA LQHFAGRWYL QIIRFLLFS NIIPISLRVN LDMGKIVYSW VIRRDSKIPG TVRSSTIPE QLGRISYLLT DKTGTLTQNE MIFKRLHLGT VAYGLDSMDE VQSHIFSIYT QSQDPPAQK GPTLTTKVR R TMSSRVHEAV KAIALCHNVT PVYESNGVTD QAEAEKQYED SCRVIYQASSP DEVALVQWTE SVGLTLVGRD QSSMQLRTPG DQILNFTILQ IFPFTYESKR MGIIVRDEST GEITFYMKGA DVVMAGIVQY NDWLEEECGN MAREGLRVLV VAKKSLAEEQ YQDFEARYVQ AKLSVHDRSL KVATVIESLE MEMELLCLTG VEDQLQADVR

Product Details

PTLETLRNAG IKVWMLTGDK LETATCTAKN AHLVTRNQDI HVFRLVTNRG EAHLELNAFR
RKHDCALVIS GDSLEVCLKY YEYEFMELAC QCPAVVCCRC APTQKAQIVR LLQERTGKLT
CAVGDGGNDV SMIQESDCGV GVEGKEGKQA SLAADFSITQ FKHLGRLLMV HGRNSYKRSA
ALSQFVIHRS LCISTMQAVF SSVFYFASVP LYQGFLIIGY STIYTMFPVF SLVLDDKDVKS
EVAMLYPELY KDLLKGRPLS YKTFLIWVLI SIYQGSTIMY GALLFESEF VHIVAISFTS
LILTELLMVA LTIQTWHWLM TVAELLSLAC YIASLVFLHE FIDVYFIATL SFLWKVSVIT
LVSCLPLYVL KYLRRRFSPS SYSKLTS

Characteristics: Human ATP9A full-length ORF (NP_006036.1, 1 a.a. - 1047 a.a.) recombinant protein with GST-tag at N-terminal.

Purification: in vitro wheat germ expression system

Target Details

Target: ATP9A

Alternative Name: ATP9A ([ATP9A Products](#))

Background: Full Gene Name: ATPase, class II, type 9A
Synonyms: ATP11A, KIAA0611

Gene ID: 10079

NCBI Accession: [NM_006045](#)

Application Details

Application Notes: Optimal working dilution should be determined by the investigator.

Comment: Preparation method: in vitro, wheat germ expression system
Product Quality tested by: 12.5% SDS-PAGE Stained with Coomassie Blue.

Restrictions: For Research Use only

Handling

Buffer: 50 mM Tris-HCl, 10 mM reduced Glutathione, pH =8.0 in the elution buffer.

Handling Advice: Aliquot to avoid repeated freezing and thawing.

Storage: -80 °C

Storage Comment: Best use within three months from the date of receipt of this protein.

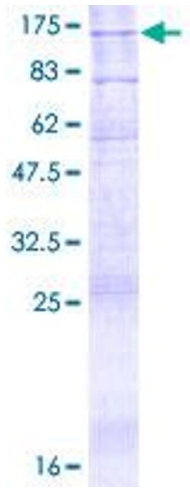


Image 1.