



[Go to Product page](#)

Datasheet for ABIN1346166

## ATP9A Protein (AA 358-456) (GST tag)

### 1 Image

#### Overview

Quantity:	10 µg
Target:	ATP9A
Protein Characteristics:	AA 358-456
Origin:	Human
Source:	Wheat germ
Protein Type:	Recombinant
Purification tag / Conjugate:	This ATP9A protein is labelled with GST tag.
Application:	ELISA, Western Blotting (WB), Antibody Array (AA), Affinity Purification (AP)

#### Product Details

Purpose:	ATP9A (Human) Recombinant Protein (Q01)
Sequence:	YSWVIRDSK IPGTVVRSST IPEQLGRISY LLTDKTGTLT QNEMIFKRLH LGTVAYGLDS MDEVQSHIFS IYQQSQDPP AQKGPTLTTK VRRTMSSRV
Characteristics:	Human ATP9A partial ORF ( NP_006036, 358 a.a. - 456 a.a.) recombinant protein with GST-tag at N-terminal.
Purification:	in vitro wheat germ expression system

#### Target Details

Target:	ATP9A
Alternative Name:	ATP9A ( <a href="#">ATP9A Products</a> )

## Target Details

Background: Full Gene Name: ATPase, class II, type 9A  
Synonyms: ATP1IA,KIAA0611

Gene ID: 10079

NCBI Accession: [NM\\_006045](#)

## Application Details

Application Notes: Optimal working dilution should be determined by the investigator.

Comment: Preparation method: in vitro, wheat germ expression system  
Product Quality tested by: 12.5% SDS-PAGE Stained with Coomassie Blue.

Restrictions: For Research Use only

## Handling

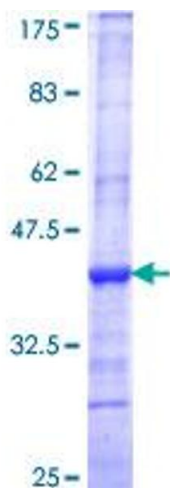
Buffer: 50 mM Tris-HCl, 10 mM reduced Glutathione, pH =8.0 in the elution buffer.

Handling Advice: Aliquot to avoid repeated freezing and thawing.

Storage: -80 °C

Storage Comment: Best use within three months from the date of receipt of this protein.

## Images



**Image 1.**