



[Go to Product page](#)

Datasheet for ABIN1346170

## ATPAF1 Protein (AA 219-328) (GST tag)

### 1 Image

#### Overview

Quantity:	10 µg
Target:	ATPAF1
Protein Characteristics:	AA 219-328
Origin:	Human
Source:	Wheat germ
Protein Type:	Recombinant
Purification tag / Conjugate:	This ATPAF1 protein is labelled with GST tag.
Application:	ELISA, Western Blotting (WB), Antibody Array (AA), Affinity Purification (AP)

#### Product Details

Purpose:	ATPAF1 (Human) Recombinant Protein (Q01)
Sequence:	LHFTALINIQ TRGEEAASQL ILYHYPELKE EKGIVLMTAE MDSTFLNVAE AQCIANQVQL FYATDRKETY GLVETFNLRP NEFKYMSVIA ELEQSGLGAE LKCAQNQNKT
Characteristics:	Human ATPAF1 partial ORF ( NP_073582, 219 a.a. - 328 a.a.) recombinant protein with GST-tag at N-terminal.
Purification:	in vitro wheat germ expression system

#### Target Details

Target:	ATPAF1
Alternative Name:	ATPAF1 ( <a href="#">ATPAF1 Products</a> )

## Target Details

Background:	Full Gene Name: ATP synthase mitochondrial F1 complex assembly factor 1 Synonyms: ATP11,ATP11p,FLJ22351,MGC88060
Gene ID:	64756
NCBI Accession:	<a href="#">NM_022745</a>

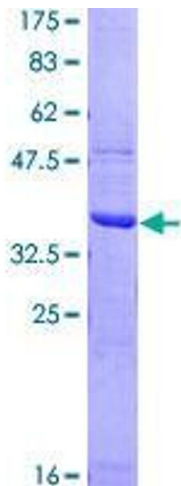
## Application Details

Application Notes:	Optimal working dilution should be determined by the investigator.
Comment:	Preparation method: in vitro, wheat germ expression system Product Quality tested by: 12.5% SDS-PAGE Stained with Coomassie Blue.
Restrictions:	For Research Use only

## Handling

Buffer:	50 mM Tris-HCl, 10 mM reduced Glutathione, pH =8.0 in the elution buffer.
Handling Advice:	Aliquot to avoid repeated freezing and thawing.
Storage:	-80 °C
Storage Comment:	Best use within three months from the date of receipt of this protein.

## Images



**Image 1.**