



[Go to Product page](#)

Datasheet for ABIN1346182

ATR Protein (AA 2545-2644) (GST tag)

1 Image

Overview

Quantity:	10 µg
Target:	ATR
Protein Characteristics:	AA 2545-2644
Origin:	Human
Source:	Wheat germ
Protein Type:	Recombinant
Purification tag / Conjugate:	This ATR protein is labelled with GST tag.
Application:	ELISA, Western Blotting (WB), Antibody Array (AA), Affinity Purification (AP)

Product Details

Purpose:	ATR (Human) Recombinant Protein (Q01)
Sequence:	DQREPLMSVL KTFLHDPLVE WSKPVKGHSK APLNETGEVV NEKAKTHVLD IEQRLQGVIK TRNRVTGLPL SIEGHVHYLI QEATDENLLC QMYLGWTPYM
Characteristics:	Human ATR partial ORF (NP_001175, 2545 a.a. - 2644 a.a.) recombinant protein with GST-tag at N-terminal.
Purification:	in vitro wheat germ expression system

Target Details

Target:	ATR
Alternative Name:	ATR (ATR Products)

Target Details

Background: Full Gene Name: ataxia telangiectasia and Rad3 related
Synonyms: FRP1, MEC1, SCKL, SCKL1

Gene ID: 545

NCBI Accession: [NM_001184](#)

Pathways: [Positive Regulation of Response to DNA Damage Stimulus](#)

Application Details

Application Notes: Optimal working dilution should be determined by the investigator.

Comment: Preparation method: in vitro, wheat germ expression system
Product Quality tested by: 12.5% SDS-PAGE Stained with Coomassie Blue.

Restrictions: For Research Use only

Handling

Buffer: 50 mM Tris-HCl, 10 mM reduced Glutathione, pH =8.0 in the elution buffer.

Handling Advice: Aliquot to avoid repeated freezing and thawing.

Storage: -80 °C

Storage Comment: Best use within three months from the date of receipt of this protein.

Images

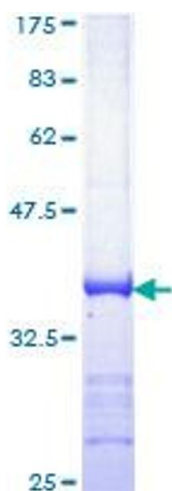


Image 1.