



[Go to Product page](#)

Datasheet for ABIN1346199

## ATXN7L1 Protein (AA 1-146) (GST tag)

### 1 Image

#### Overview

Quantity:	10 µg
Target:	ATXN7L1
Protein Characteristics:	AA 1-146
Origin:	Human
Source:	Wheat germ
Protein Type:	Recombinant
Purification tag / Conjugate:	This ATXN7L1 protein is labelled with GST tag.
Application:	ELISA, Western Blotting (WB), Antibody Array (AA), Affinity Purification (AP)

#### Product Details

Purpose:	ATXN7L4 (Human) Recombinant Protein (P01)
Sequence:	MTSERSRIPC LSAAAAEGTG KKQQEGRAMA TLDRKVPSPE AFLGKPWSSW IDAAKLHCSD NVDLEEAGKE GGKSREVMRL NKEDMHLFGH YPAHDDFYLV VCSACNQVVK PQVFQSHCGR KQDNRRNEGI SRSGPESSQA IEKHQV
Characteristics:	Human ATXN7L4 full-length ORF ( NP_689962.1, 1 a.a. - 146 a.a.) recombinant protein with GST-tag at N-terminal.
Purification:	in vitro wheat germ expression system

#### Target Details

Target:	ATXN7L1
Alternative Name:	ATXN7L1 ( <a href="#">ATXN7L1 Products</a> )

## Target Details

Background:	Full Gene Name: ataxin 7-like 1 Synonyms: ATXN7L4,FLJ40255,FLJ58242,KIAA1218,MGC10760,MGC33190
Gene ID:	222255
NCBI Accession:	<a href="#">NM_152749</a>

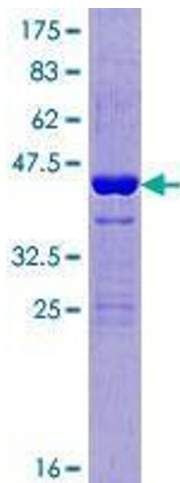
## Application Details

Application Notes:	Optimal working dilution should be determined by the investigator.
Comment:	Preparation method: in vitro, wheat germ expression system Product Quality tested by: 12.5% SDS-PAGE Stained with Coomassie Blue.
Restrictions:	For Research Use only

## Handling

Buffer:	50 mM Tris-HCl, 10 mM reduced Glutathione, pH =8.0 in the elution buffer.
Handling Advice:	Aliquot to avoid repeated freezing and thawing.
Storage:	-80 °C
Storage Comment:	Best use within three months from the date of receipt of this protein.

## Images



**Image 1.**