



[Go to Product page](#)

Datasheet for ABIN1346237

Axin Protein (AA 643-740) (GST tag)

1 Image

Overview

Quantity:	10 µg
Target:	Axin (AXIN1)
Protein Characteristics:	AA 643-740
Origin:	Human
Source:	Wheat germ
Protein Type:	Recombinant
Purification tag / Conjugate:	This Axin protein is labelled with GST tag.
Application:	Western Blotting (WB), ELISA, Antibody Array (AA), Affinity Purification (AP)

Product Details

Purpose:	AXIN1 (Human) Recombinant Protein (Q02)
Sequence:	ISRHRRTGHG SSGTRKPQPH ENSRPLSLEH PWAGPQLRTS VQPShLFIQD PTMPHPAPN PLTQLEEAR RLEEEK RAS RAPSQRVYVQ EVMRRGRA
Characteristics:	Human AXIN1 partial ORF (NP_003493, 643 a.a. - 740 a.a.) recombinant protein with GST-tag at N-terminal.
Purification:	in vitro wheat germ expression system

Target Details

Target:	Axin (AXIN1)
Alternative Name:	AXIN1 (AXIN1 Products)

Target Details

Background:	Full Gene Name: axin 1 Synonyms: AXIN,MGC52315
Gene ID:	8312
NCBI Accession:	NM_003502
Pathways:	WNT Signaling , Sensory Perception of Sound , Regulation of G-Protein Coupled Receptor Protein Signaling

Application Details

Application Notes:	Optimal working dilution should be determined by the investigator.
Comment:	Preparation method: in vitro, wheat germ expression system Product Quality tested by: 12.5% SDS-PAGE Stained with Coomassie Blue.
Restrictions:	For Research Use only

Handling

Buffer:	50 mM Tris-HCl, 10 mM reduced Glutathione, pH =8.0 in the elution buffer.
Handling Advice:	Aliquot to avoid repeated freezing and thawing.
Storage:	-80 °C
Storage Comment:	Best use within three months from the date of receipt of this protein.

Images

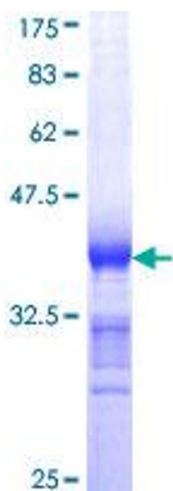


Image 1.