

Datasheet for ABIN1346362
BAG2 Protein (AA 1-211) (GST tag)



[Go to Product page](#)

1 Image

Overview

Quantity:	10 µg
Target:	BAG2
Protein Characteristics:	AA 1-211
Origin:	Human
Source:	Wheat germ
Protein Type:	Recombinant
Purification tag / Conjugate:	This BAG2 protein is labelled with GST tag.
Application:	Western Blotting (WB), ELISA, Antibody Array (AA), Affinity Purification (AP)

Product Details

Sequence:	MAQAKINAKA NEGRFCRSSS MADRSSRLLE SLDQLELRVE ALREAATAVE QEKEILLEMI HSIQNSQDMR QISDGEREEL NLTANRLMGR TLTVEVSVET IRNPQQQESL KHATRIIDEV VNKFLDDLGN AKSHLMSLYS ACSSEVPHGP VDQKFQSIVI GCALEDQKKI KRRLETLLRN IENSDKAIKL LEHSGGAGSK TLQQNAESRF N
-----------	---

Target Details

Target:	BAG2
Alternative Name:	BAG2 (BAG2 Products)
Background:	Full Gene Name: BCL2-associated athanogene 2 Synonyms: BAG-2,KIAA0576,MGC149462,dJ41711.2
Gene ID:	9532

Target Details

NCBI Accession: [NP_004273](#), [NM_004282](#)

Application Details

Application Notes: Optimal working dilution should be determined by the investigator.

Comment: Preparation method: in vitro, wheat germ expression system
Product Quality tested by: 12.5% SDS-PAGE Stained with Coomassie Blue.

Restrictions: For Research Use only

Handling

Buffer: 50 mM Tris-HCl, 10 mM reduced Glutathione, pH =8.0 in the elution buffer.

Handling Advice: Aliquot to avoid repeated freezing and thawing.

Storage: -80 °C

Storage Comment: Store at -80 °C. Aliquot to avoid repeated freezing and thawing.

Expiry Date: 3 months

Images

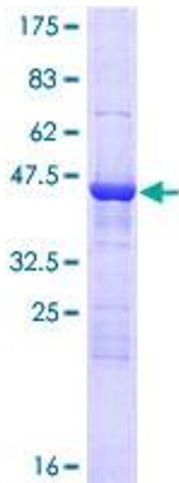


Image 1.