



[Go to Product page](#)

Datasheet for ABIN1346387

BAIAP2L2 Protein (AA 1-518) (GST tag)

1 Image

Overview

Quantity:	25 µg
Target:	BAIAP2L2
Protein Characteristics:	AA 1-518
Origin:	Human
Source:	Wheat germ
Protein Type:	Recombinant
Purification tag / Conjugate:	This BAIAP2L2 protein is labelled with GST tag.
Application:	ELISA, Western Blotting (WB), Antibody Array (AA), Affinity Purification (AP)

Product Details

Purpose:	BAIAP2L2 (Human) Recombinant Protein (P01)
Sequence:	<p>MAPEMDQFYR STMAIYKSIM EQFNPALENL VYLGNNYLRA FHALSEAAEV YFSAIQKIGE</p> <p>RALQSPTSQI LGEILVQMSD TQRHLNSDLE VVQTFHGGL LQHMEKNTKL DMQFIKDSRQ</p> <p>HYELEYRHRA ANLEKCMSEL WRMERKRDKN VREMKEVNR LHAQMQAFVS ESQRAAELEE</p> <p>KRRYRFLAEK HLLLSNTFLQ FFGRARGMLQ NRVLLWKEQS EASRSPSRAH SPGLLGALG</p> <p>PPYPSGRLTP TRLDMPRPL GEFSSPRSRH GSGSYGTEPD ARPASQLEPD RRSLPRTPSA</p> <p>SSLYSGSAQS SRSNSFGERP GGGGGARRVR ALVSHSEGAN HTLLRFSAGD VVEVLVPEAQ</p> <p>NGWLYGKLEG SSASGWFPEA YVKALEEGPV NPMPVTPMT SMTSMSPMTP MTPMNPGNEL</p> <p>PSRSYPLRGS HSLDDLLDRP GNSTPSRVPS RAPSPAPPPL PSSRRSSMGS TAVATDVKKL</p> <p>MSSEQYPPQE LFPRGTNPFA TVKLRPTITN DRSAPLIR</p>
Characteristics:	Human BAIAP2L2 full-length ORF (AAH15619.1, 1 a.a. - 518 a.a.) recombinant protein with GST-tag at N-terminal.

Product Details

Purification: in vitro wheat germ expression system

Target Details

Target: BAIAP2L2

Alternative Name: BAIAP2L2 ([BAIAP2L2 Products](#))

Background: Full Gene Name: BAI1-associated protein 2-like 2
Synonyms: FLJ22582

Gene ID: 80115

Application Details

Application Notes: Optimal working dilution should be determined by the investigator.

Comment: Preparation method: in vitro, wheat germ expression system
Product Quality tested by: 12.5% SDS-PAGE Stained with Coomassie Blue.

Restrictions: For Research Use only

Handling

Buffer: 50 mM Tris-HCl, 10 mM reduced Glutathione, pH =8.0 in the elution buffer.

Handling Advice: Aliquot to avoid repeated freezing and thawing.

Storage: -80 °C

Storage Comment: Best use within three months from the date of receipt of this protein.

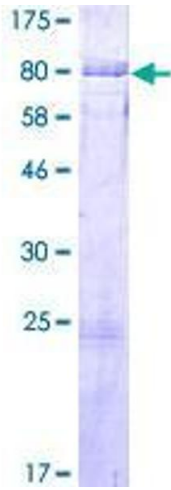


Image 1.