



[Go to Product page](#)

Datasheet for ABIN1346403

## BAP1 Protein (AA 61-160) (GST tag)

### 1 Image

#### Overview

Quantity:	10 µg
Target:	BAP1
Protein Characteristics:	AA 61-160
Origin:	Human
Source:	Wheat germ
Protein Type:	Recombinant
Purification tag / Conjugate:	This BAP1 protein is labelled with GST tag.
Application:	ELISA, Western Blotting (WB), Antibody Array (AA), Affinity Purification (AP)

#### Product Details

Purpose:	BAP1 (Human) Recombinant Protein (Q01)
Sequence:	KVSTLVDDTS VIDDDIVNNM FFAHQLIPNS CATHALLSVL LNCSSVDLGP TLRMKDFTK GFSPESKGYA IGNAPELAKA HNSHARPEPR HLPEKQNGLS
Characteristics:	Human BAP1 partial ORF ( AAH01596, 61 a.a. - 160 a.a.) recombinant protein with GST-tag at N-terminal.
Purification:	in vitro wheat germ expression system

#### Target Details

Target:	BAP1
Alternative Name:	BAP1 ( <a href="#">BAP1 Products</a> )

## Target Details

Background:	Full Gene Name: BRCA1 associated protein-1 (ubiquitin carboxy-terminal hydrolase) Synonyms: DKFZp686N04275,FLJ35406,FLJ37180,HUCEP-13,KIAA0272,UCHL2,hucep-6
Gene ID:	8314

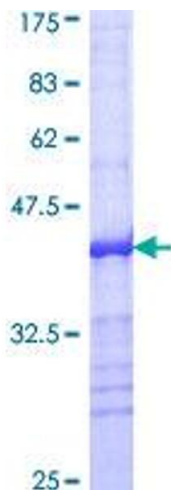
## Application Details

Application Notes:	Optimal working dilution should be determined by the investigator.
Comment:	Preparation method: in vitro, wheat germ expression system Product Quality tested by: 12.5% SDS-PAGE Stained with Coomassie Blue.
Restrictions:	For Research Use only

## Handling

Buffer:	50 mM Tris-HCl, 10 mM reduced Glutathione, pH =8.0 in the elution buffer.
Handling Advice:	Aliquot to avoid repeated freezing and thawing.
Storage:	-80 °C
Storage Comment:	Best use within three months from the date of receipt of this protein.

## Images



**Image 1.**