



[Go to Product page](#)

Datasheet for ABIN1346407

## BARHL1 Protein (AA 1-327) (GST tag)

### 1 Image

#### Overview

Quantity:	25 µg
Target:	BARHL1
Protein Characteristics:	AA 1-327
Origin:	Human
Source:	Wheat germ
Protein Type:	Recombinant
Purification tag / Conjugate:	This BARHL1 protein is labelled with GST tag.
Application:	ELISA, Western Blotting (WB), Antibody Array (AA), Affinity Purification (AP)

#### Product Details

Purpose:	BARHL1 (Human) Recombinant Protein (P01)
Sequence:	MEGSNGFGID SILSHRAGSP ALPKGDPLLG DCRSPLELSP RSESSSDCSS PASPGRDCLE TGTPRPGGAS GPGLDShLQP GQLSAPAQSR TVTSSFLIRD ILADCKPLAA CAPYSSSGQP AAPEPGGRLA AKAAEDFRDK LDKSGSNASS DSEYKVKEEG DREISSRDS PPVRLKKPRK ARTAFTHDQL AQLERSFERQ KYLSVQDRME LAASLNLTDT QVKTWYQNRK TKWKRQTAVG LELLAEAGNY SALQRMFPSP YFYPQSLVSN LDPGAALYLY RGPSAPPPAL QRPLVPRILI HGLQGASEPP PPLPPLAGVL PRAAQPR
Characteristics:	Human BARHL1 full-length ORF ( NP_064448.1, 1 a.a. - 327 a.a.) recombinant protein with GST-tag at N-terminal.
Purification:	in vitro wheat germ expression system

## Target Details

Target:	BARHL1
Alternative Name:	BARHL1 ( <a href="#">BARHL1 Products</a> )
Background:	Full Gene Name: BarH-like homeobox 1 Synonyms:
Gene ID:	56751
NCBI Accession:	<a href="#">NM_020064</a>
Pathways:	<a href="#">Sensory Perception of Sound</a>

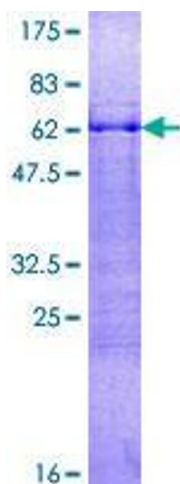
## Application Details

Application Notes:	Optimal working dilution should be determined by the investigator.
Comment:	Preparation method: in vitro, wheat germ expression system Product Quality tested by: 12.5% SDS-PAGE Stained with Coomassie Blue.
Restrictions:	For Research Use only

## Handling

Buffer:	50 mM Tris-HCl, 10 mM reduced Glutathione, pH =8.0 in the elution buffer.
Handling Advice:	Aliquot to avoid repeated freezing and thawing.
Storage:	-80 °C
Storage Comment:	Best use within three months from the date of receipt of this protein.

## Images



**Image 1.**