

Datasheet for ABIN1346410
BARHL2 Protein (AA 145-234) (GST tag)



[Go to Product page](#)

1 Image

Overview

Quantity:	10 µg
Target:	BARHL2
Protein Characteristics:	AA 145-234
Origin:	Human
Source:	Wheat germ
Protein Type:	Recombinant
Purification tag / Conjugate:	This BARHL2 protein is labelled with GST tag.
Application:	ELISA, Western Blotting (WB), Antibody Array (AA), Affinity Purification (AP)

Product Details

Purpose:	BARHL2 (Human) Recombinant Protein (Q01)
Sequence:	KDILGDSKPL AACAPYSTSV SSPHHTPKQE SNAVHESFRP KLEQEDSKTK LDKREDSQSD IKCHGTKEEG DREITSSRES PPVRAKKPRK
Characteristics:	Human BARHL2 partial ORF (NP_064447, 145 a.a. - 234 a.a.) recombinant protein with GST-tag at N-terminal.
Purification:	in vitro wheat germ expression system

Target Details

Target:	BARHL2
Alternative Name:	BARHL2 (BARHL2 Products)

Target Details

Background: Full Gene Name: BarH-like homeobox 2
Synonyms:

Gene ID: 343472

NCBI Accession: [NM_020063](#)

Pathways: [Chromatin Binding](#), [Regulation of Cell Size](#)

Application Details

Application Notes: Optimal working dilution should be determined by the investigator.

Comment: Preparation method: in vitro, wheat germ expression system
Product Quality tested by: 12.5% SDS-PAGE Stained with Coomassie Blue.

Restrictions: For Research Use only

Handling

Buffer: 50 mM Tris-HCl, 10 mM reduced Glutathione, pH =8.0 in the elution buffer.

Handling Advice: Aliquot to avoid repeated freezing and thawing.

Storage: -80 °C

Storage Comment: Best use within three months from the date of receipt of this protein.

Images

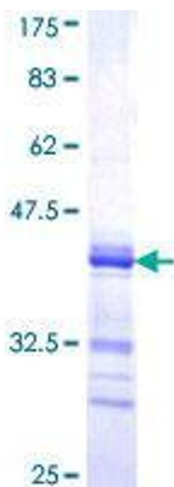


Image 1.