



[Go to Product page](#)

Datasheet for ABIN1346427

BAT3 Protein (AA 1033-1132) (GST tag)

1 Image

Overview

Quantity:	10 µg
Target:	BAT3
Protein Characteristics:	AA 1033-1132
Origin:	Human
Source:	Wheat germ
Protein Type:	Recombinant
Purification tag / Conjugate:	This BAT3 protein is labelled with GST tag.
Application:	Western Blotting (WB), ELISA, Antibody Array (AA), Affinity Purification (AP)

Product Details

Purpose:	BAT3 (Human) Recombinant Protein (Q01)
Sequence:	KPQPPLSDAY LSGMPAKRRK TMQGEGPQLL LSEAVSRAAK AAGARPLTSP ESLSRDLEAP EVQESYRQQL RSDIQRRLQE DPNYSPQRFP NAQRAFADDP
Characteristics:	Human BAT3 partial ORF (NP_004630, 1033 a.a. - 1132 a.a.) recombinant protein with GST-tag at N-terminal.
Purification:	in vitro wheat germ expression system

Target Details

Target:	BAT3
Alternative Name:	BAT3 (BAT3 Products)

Target Details

Background:	Full Gene Name: HLA-B associated transcript 3 Synonyms: BAG-6,BAG6,D6S52E,G3
Gene ID:	7917
NCBI Accession:	NM_004639

Application Details

Application Notes:	Optimal working dilution should be determined by the investigator.
Comment:	Preparation method: in vitro, wheat germ expression system Product Quality tested by: 12.5% SDS-PAGE Stained with Coomassie Blue.
Restrictions:	For Research Use only

Handling

Buffer:	50 mM Tris-HCl, 10 mM reduced Glutathione, pH =8.0 in the elution buffer.
Handling Advice:	Aliquot to avoid repeated freezing and thawing.
Storage:	-80 °C
Storage Comment:	Best use within three months from the date of receipt of this protein.

Images

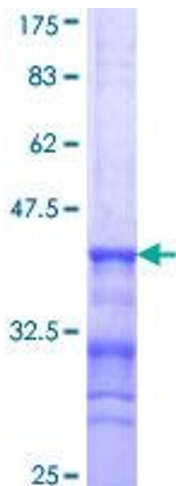


Image 1.