

Datasheet for ABIN1346454
BAZ2A Protein (AA 1681-1780) (GST tag)



[Go to Product page](#)

1 Image

Overview

Quantity:	10 µg
Target:	BAZ2A
Protein Characteristics:	AA 1681-1780
Origin:	Human
Source:	Wheat germ
Protein Type:	Recombinant
Purification tag / Conjugate:	This BAZ2A protein is labelled with GST tag.
Application:	Antibody Array (AA), Affinity Purification (AP), ELISA, Western Blotting (WB)

Product Details

Purpose:	BAZ2A (Human) Recombinant Protein (Q01)
Sequence:	PKMEAVPEGD WFCTVCLAQQ VEGEFTQKPG FPKRGQKRKS GYSLNFSEGD GRRRRVLLKG RESPAAGPRY SEERLSPSKR RRLSMRNHHS DLTFCEIILM
Characteristics:	Human BAZ2A partial ORF (NP_038477.1, 1681 a.a. - 1780 a.a.) recombinant protein with GST-tag at N-terminal.
Purification:	in vitro wheat germ expression system

Target Details

Target:	BAZ2A
Alternative Name:	BAZ2A (BAZ2A Products)

Target Details

Background:	Full Gene Name: bromodomain adjacent to zinc finger domain, 2A Synonyms: DKFZp781B109,FLJ13768,FLJ13780,FLJ45876,KIAA0314,TIP5,WALp3
Gene ID:	11176
NCBI Accession:	NM_013449

Application Details

Application Notes:	Optimal working dilution should be determined by the investigator.
Comment:	Preparation method: in vitro, wheat germ expression system Product Quality tested by: 12.5% SDS-PAGE Stained with Coomassie Blue.
Restrictions:	For Research Use only

Handling

Buffer:	50 mM Tris-HCl, 10 mM reduced Glutathione, pH =8.0 in the elution buffer.
Handling Advice:	Aliquot to avoid repeated freezing and thawing.
Storage:	-80 °C
Storage Comment:	Best use within three months from the date of receipt of this protein.

Images

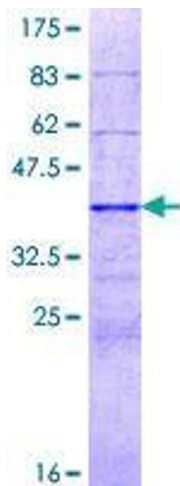


Image 1.