

Datasheet for ABIN1346457  
**BAZ2B Protein (AA 1-643) (GST tag)**



[Go to Product page](#)

1 Image

Overview

Quantity:	2 µg
Target:	BAZ2B
Protein Characteristics:	AA 1-643
Origin:	Human
Source:	Wheat germ
Protein Type:	Recombinant
Purification tag / Conjugate:	This BAZ2B protein is labelled with GST tag.
Application:	ELISA, Western Blotting (WB), Antibody Array (AA), Affinity Purification (AP)

Product Details

Purpose:	BAZ2B (Human) Recombinant Protein (P01)
Sequence:	MGQTKSTSSG GGNRKCNEEQ SKNQPLDARV DKIKDKKPRK KAMESSNSD SDSGTSSDTS SEGISSSDSD DLEEDDEEED QSIIESEDDD SDSESEAQHK SNNQVLLHGI SDPKADGQKA TEKAQEKRIH QPLPLASESQ THSFQSQQKQ PQVLSQQLPF IFQSSQAKEE SVNKHTSVIQ STGLVSNVVP LSLVNQAKKE TYMKLIVPSP DVLKAGNKNT SEESSLTSE LRSKREYKQ AFPSQLKKQE SSKSLKKVIA ALSNPKATSS SPAHPKQTLN NNHPNPFLTQ ALLGNHQPNG VIQSVIQEAP LALTTKTKMQ SKINENIAAA SSTPFSSPVN LSTSGRRTPG NQTPVMPSAS PILHSQGKEK AVSNNVNPVK TQHHSHPAKS LVEQFRGTDS DIPSSKDSKD SNEDEEEDDE EEDDEDEDD ESDDSQSGTS KRRRVTDERE LRIPLEYGWQ RETRIRNFGG RLQGEVAYYA PCGKCLRQYP EVIKYLSRNG IMDISRDNFS FSAKIRVGDF YEARDGPQGM QWCLLKEEDV IPRIRAMEGR RGRPPNPDRQ RAREESRMRR RKGRPPNVGN AEFLDNADAK LLRKLQAQEI ARQAAQIKLL RKLQKQEQAR VAKKAKKQQA IMLLRSGSK KNR

## Product Details

---

Characteristics:	Human BAZ2B full-length ORF ( AAH12576.1, 1 a.a. - 643 a.a.) recombinant protein with GST-tag at N-terminal.
Purification:	in vitro wheat germ expression system

## Target Details

---

Target:	BAZ2B
Alternative Name:	BAZ2B ( <a href="#">BAZ2B Products</a> )
Background:	Gene: bromodomain adjacent to zinc finger domain, 2B Synonyms: DKFZp434H071, DKFZp762I0516, FLJ45644, WALp4
Gene ID:	29994

## Application Details

---

Application Notes:	Optimal working dilution should be determined by the investigator.
Restrictions:	For Research Use only

## Handling

---

Buffer:	50 mM Tris-HCl, 10 mM reduced Glutathione, pH =8.0 in the elution buffer.
Handling Advice:	Aliquot to avoid repeated freezing and thawing.
Storage:	-80 °C
Storage Comment:	Best use within three months from the date of receipt of this protein.

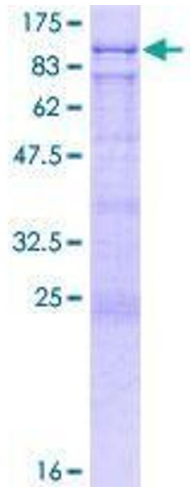


Image 1.