

Datasheet for ABIN1346462

BBOX1 Protein (AA 278-387) (GST tag)[Go to Product page](#)**1** Image

Overview

Quantity:	10 µg
Target:	BBOX1
Protein Characteristics:	AA 278-387
Origin:	Human
Source:	Wheat germ
Protein Type:	Recombinant
Purification tag / Conjugate:	This BBOX1 protein is labelled with GST tag.
Application:	ELISA, Western Blotting (WB), Antibody Array (AA), Affinity Purification (AP)

Product Details

Purpose:	BBOX1 (Human) Recombinant Protein (Q01)
Sequence:	IELDDKGQVV RINFNNATRD TIFDVPVERV QPFYAALKEF VDLMNSKESK FTFKMNPGDV ITFDNWRLRH GRRSYEAGTE ISRHLEGAYA DWDVMSRLR ILRQRVENG
Characteristics:	Human BBOX1 partial ORF (NP_003977, 278 a.a. - 387 a.a.) recombinant protein with GST-tag at N-terminal.
Purification:	in vitro wheat germ expression system

Target Details

Target:	BBOX1
Alternative Name:	BBOX1 (BBOX1 Products)

Target Details

Background:	Full Gene Name: butyrobetaine (gamma), 2-oxoglutarate dioxygenase (gamma-butyrobetaine hydroxylase) 1 Synonyms: BBH,BBOX,G-BBH,gamma-BBH
Gene ID:	8424
NCBI Accession:	NM_003986

Application Details

Application Notes:	Optimal working dilution should be determined by the investigator.
Comment:	Preparation method: in vitro, wheat germ expression system Product Quality tested by: 12.5% SDS-PAGE Stained with Coomassie Blue.
Restrictions:	For Research Use only

Handling

Buffer:	50 mM Tris-HCl, 10 mM reduced Glutathione, pH =8.0 in the elution buffer.
Handling Advice:	Aliquot to avoid repeated freezing and thawing.
Storage:	-80 °C
Storage Comment:	Best use within three months from the date of receipt of this protein.

Images

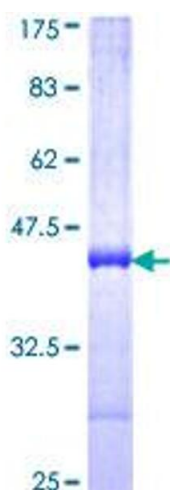


Image 1.