



[Go to Product page](#)

Datasheet for ABIN1346467

## BBS10 Protein (AA 1-151) (GST tag)

### 1 Image

#### Overview

Quantity:	10 µg
Target:	BBS10
Protein Characteristics:	AA 1-151
Origin:	Human
Source:	Wheat germ
Protein Type:	Recombinant
Purification tag / Conjugate:	This BBS10 protein is labelled with GST tag.
Application:	ELISA, Western Blotting (WB), Antibody Array (AA), Affinity Purification (AP)

#### Product Details

Sequence: MLPVSCKLPN MGTSQSYLSS SMPAGCVLPV GGNFEILLHY YLLNYAKKCH QSEETMVSMI  
IANALLGIPK VLYKSKTGKY SFPHTYIRAV HALQTNQPLV SSQTGLESVM GKYQLLTSVL  
QCLTKILTID MVITVKRHPQ KVHNQDSEDE L

#### Target Details

Target:	BBS10
Alternative Name:	BBS10 ( <a href="#">BBS10 Products</a> )
Background:	Full Gene Name: Bardet-Biedl syndrome 10 Synonyms: C12orf58,FLJ23560
Gene ID:	79738

## Application Details

---

Application Notes:	Optimal working dilution should be determined by the investigator.
Comment:	Preparation method: in vitro, wheat germ expression system Product Quality tested by: 12.5% SDS-PAGE Stained with Coomassie Blue.
Restrictions:	For Research Use only

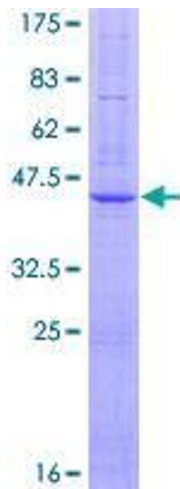
## Handling

---

Buffer:	50 mM Tris-HCl, 10 mM reduced Glutathione, pH =8.0 in the elution buffer.
Handling Advice:	Aliquot to avoid repeated freezing and thawing.
Storage:	-80 °C
Storage Comment:	Store at -80 °C. Aliquot to avoid repeated freezing and thawing.
Expiry Date:	3 months

## Images

---



**Image 1.**