



[Go to Product page](#)

Datasheet for ABIN1346507

## BCAS2 Protein (AA 1-225) (GST tag)

### 1 Image

#### Overview

Quantity:	10 µg
Target:	BCAS2
Protein Characteristics:	AA 1-225
Origin:	Human
Source:	Wheat germ
Protein Type:	Recombinant
Purification tag / Conjugate:	This BCAS2 protein is labelled with GST tag.
Application:	Western Blotting (WB), ELISA, Antibody Array (AA), Affinity Purification (AP)

#### Product Details

Sequence: MAGTGLVAGE VVVDALPYFD QGYEAPGVRE AAAALVEEET RRYRPTKKNYL SYLTAPDYSA  
FETDIMRNEF ERLAARQPIE LLSMKRYELP APSSGQKNDI TAWQECVNNS MAQLEHQAVR  
IENLELMSQH GCNAWKVYNE NLVHMIEHAQ KELQKLRKHI QDLNWQRKNM QLTAGSKLRE  
MESNWVSLVS KNYEIERTIV QLENEIQIK QQHGEANKEN IRQDF

#### Target Details

Target:	BCAS2
Alternative Name:	BCAS2 ( <a href="#">BCAS2 Products</a> )
Background:	Full Gene Name: breast carcinoma amplified sequence 2 Synonyms: DAM1
Gene ID:	10286

## Application Details

---

Application Notes:	Optimal working dilution should be determined by the investigator.
Comment:	Preparation method: in vitro, wheat germ expression system Product Quality tested by: 12.5% SDS-PAGE Stained with Coomassie Blue.
Restrictions:	For Research Use only

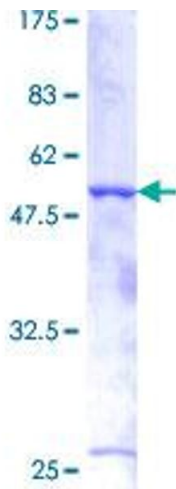
## Handling

---

Buffer:	50 mM Tris-HCl, 10 mM reduced Glutathione, pH =8.0 in the elution buffer.
Handling Advice:	Aliquot to avoid repeated freezing and thawing.
Storage:	-80 °C
Storage Comment:	Store at -80 °C. Aliquot to avoid repeated freezing and thawing.
Expiry Date:	3 months

## Images

---



**Image 1.**