



[Go to Product page](#)

Datasheet for ABIN1346511

BCAS3 Protein (AA 1-913) (GST tag)

1 Image

Overview

Quantity:	10 µg
Target:	BCAS3
Protein Characteristics:	AA 1-913
Origin:	Human
Source:	Wheat germ
Protein Type:	Recombinant
Purification tag / Conjugate:	This BCAS3 protein is labelled with GST tag.
Application:	Western Blotting (WB), ELISA, Antibody Array (AA), Affinity Purification (AP)

Product Details

Purpose:	BCAS3 (Human) Recombinant Protein (P01)
Sequence:	MNEAMATDSP RRRSRCTGGV VVRPQAVTEQ SYMESVVTFL QDVVPQAYSG TPLTEEKEKI VWVRFENADL NDTSRNLEFH EIHSTGSEPP LLIMIGYSDG MQVWSIPISG EAQELFSVRH GPIRAARILP APQFGAQKCD NFAEKRPLL G VCKSIGSSGT SPPYCCVDLY SLRTGEMVKS IQFKTPIYDL HCNKRILVVV LQEKIAAFDS CTFTKKFFVT SCYPCPGPNM NPIALGSRWL AYAENKLIRC HQSRGGACGD NIQSYTATVI SAAKTLKSGL TMVGKVVTVL TGTLPSPGVTE DDVAIHSNSR RSPLVPGIIT VIDTETVGEQ QVLVSESDSDS DGIVAHFPAH EKPVCCMAFN TSGMLLVTTD TLGHDFHFVQ ILTHPWSSSQ CAVHHLYTLH RGETEAKVQD ICFSHDCRWW VVSTLRGTSH VFPINPYGGQ PCVIRTHMSPR VVNRMRSRFQK SAGLEEIEQE LTSKQGGRCG PVPGLSSSPS GSPLHGKLNQ QDSYNNFTNN NPGNPRLSPL PSLMVMPLA QIKQPMTLGT ITKRTGKVKP PPQISPSKSM GGEFCVAAIF GTSRSWFANN AGLKREKDQS KQVVVESLYI ISCYGTLVVEH MMEPRPLSTA PKISDDTPLE MMTSPRASWT LVRTPOWNEQ QPPFNANHPL

Product Details

LLAADAVQYY QFLAGLVPP GSPGPITRHG SYDSLADHS GQEDDEWLSQ VEIVTHTGPH
RRLWMGPQFQ FKTIHPSGQT TVISSSSSVL QSHGPSDTPQ PLLDFDTDDL DLNSLRIQPV
RSDPVSMPPGS SRPVSDRRGV STVIDAASGT FDRSVTLLEV CGSWPEGFGL RHMSSMEHTE
EGLRERLADA MAESPSRDVV GSGTELQREG SIETLSNSSG STSGSIPRNF DGYRSPLPTN
ESQPLSLFPT GFP

Characteristics: Human BCAS3 full-length ORF (NP_060149.2, 1 a.a. - 913 a.a.) recombinant protein with GST-tag at N-terminal.

Purification: in vitro wheat germ expression system

Target Details

Target: BCAS3

Alternative Name: BCAS3 ([BCAS3 Products](#))

Background: Full Gene Name: breast carcinoma amplified sequence 3
Synonyms: DKFZp686O1527,FLJ20128,GAOB1,MAAB,MGC4973

Gene ID: 54828

NCBI Accession: [NM_017679](#)

Application Details

Application Notes: Optimal working dilution should be determined by the investigator.

Comment: Preparation method: in vitro, wheat germ expression system
Product Quality tested by: 12.5% SDS-PAGE Stained with Coomassie Blue.

Restrictions: For Research Use only

Handling

Buffer: 50 mM Tris-HCl, 10 mM reduced Glutathione, pH =8.0 in the elution buffer.

Handling Advice: Aliquot to avoid repeated freezing and thawing.

Storage: -80 °C

Storage Comment: Best use within three months from the date of receipt of this protein.

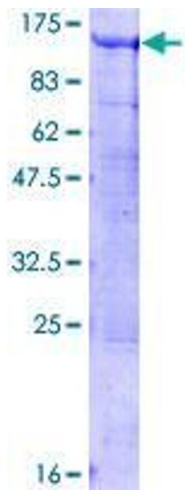


Image 1.