

Datasheet for ABIN1346518
BCCIP Protein (AA 1-314) (GST tag)



[Go to Product page](#)

1 Image

Overview

Quantity:	10 µg
Target:	BCCIP
Protein Characteristics:	AA 1-314
Origin:	Human
Source:	Wheat germ
Protein Type:	Recombinant
Purification tag / Conjugate:	This BCCIP protein is labelled with GST tag.
Application:	ELISA, Western Blotting (WB), Antibody Array (AA), Affinity Purification (AP)

Product Details

Purpose:	BCCIP (Human) Recombinant Protein (P01)
Sequence:	MASRSKRRRAV ESGVPQPPDP PVQRDEEEEEK EVENEDDDD DSDKEKDEED EVIDEEVNIE FEAYSLSDND YDGIKLLQ LFLKAPVNTA ELTDLLIQN HIGSVIKQTD VSEDSNDDMD EDEVFGFISL LNLTERKGTQ CVEQIQELVL RFCEKNCEKS MVEQLDKFLN DTTKPVGLLL SERFINVPPQ IALPMYQLQ KELAGAHRTN KPCGKCYFY LISKTFVEAE KNNSKKKPSN KKKAALMFAN AEEFFYEKA ILKFNYSVQE ESDTCLGGKW SFDDVPMTPL RTVMLIPGDK MNEIMDKLKE YLSV
Characteristics:	Human BCCIP full-length ORF (AAH09771, 1 a.a. - 314 a.a.) recombinant protein with GST-tag at N-terminal.
Purification:	in vitro wheat germ expression system

Target Details

Target:	BCCIP
Alternative Name:	BCCIP (BCCIP Products)
Background:	Full Gene Name: BRCA2 and CDKN1A interacting protein Synonyms: TOK-1,TOK1
Gene ID:	56647

Application Details

Application Notes:	Optimal working dilution should be determined by the investigator.
Comment:	Preparation method: in vitro, wheat germ expression system Product Quality tested by: 12.5% SDS-PAGE Stained with Coomassie Blue.
Restrictions:	For Research Use only

Handling

Buffer:	50 mM Tris-HCl, 10 mM reduced Glutathione, pH =8.0 in the elution buffer.
Handling Advice:	Aliquot to avoid repeated freezing and thawing.
Storage:	-80 °C
Storage Comment:	Best use within three months from the date of receipt of this protein.

Images

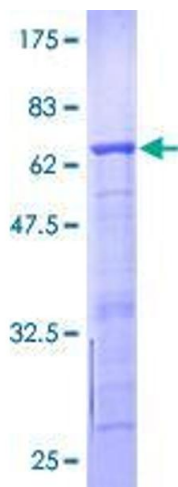


Image 1.