



[Go to Product page](#)

Datasheet for ABIN1346525

BCKDHA Protein (AA 1-445) (GST tag)

1 Image

Overview

Quantity:	10 µg
Target:	BCKDHA
Protein Characteristics:	AA 1-445
Origin:	Human
Source:	Wheat germ
Protein Type:	Recombinant
Purification tag / Conjugate:	This BCKDHA protein is labelled with GST tag.
Application:	ELISA, Western Blotting (WB), Antibody Array (AA), Affinity Purification (AP)

Product Details

Purpose:	BCKDHA (Human) Recombinant Protein (P01)
Sequence:	MAVAIAAARV WRLNRGLSQA ALLLLRQPGA RGLARSHPPR QQQFSSLDD KPQFPGASAE FIDKLEFIQP NVISGIPIYR VMDRQGQIIN PSEDPHLPKE KVLKLYKSMT LLNTMDRILY ESQRQGRISF YMTNYGEEGT HVGSAAALDN TDLVFGQYRE AGVLMYRDYP LELFMAQCYG NISDLGKGRQ MPVHYGCKER HFVTISSPLA TQIPQAVGAA YAAKRANANR VVICYFGEGA ASEGDAHAGF NFAATLECP IFFCRNNGYA ISTPTSEQYR GDGIAARGPG YGIMSIRVDG NDVFAVYNAT KEARRRAVAE NQPFLIEAMT YRIGHHSTSD DSSAYRSVDE VNYWDKQDHP ISRLRHLYLLS QGWWDEEQEK AWRKQSRRKV MEAFEQAERK PKPNPNULLFS DVYQEMPAQL RKQQESLARH LQTYGEHYPL DHFDK
Characteristics:	Human BCKDHA full-length ORF (AAH07878.1, 1 a.a. - 445 a.a.) recombinant protein with GST-tag at N-terminal.

Product Details

Purification: in vitro wheat germ expression system

Target Details

Target: BCKDHA

Alternative Name: BCKDHA ([BCKDHA Products](#))

Background: Full Gene Name: branched chain keto acid dehydrogenase E1, alpha polypeptide
Synonyms: BCKDE1A,FLJ45695,MSU,MSUD1,OVD1A

Gene ID: 593

Application Details

Application Notes: Optimal working dilution should be determined by the investigator.

Comment: Preparation method: in vitro, wheat germ expression system
Product Quality tested by: 12.5% SDS-PAGE Stained with Coomassie Blue.

Restrictions: For Research Use only

Handling

Buffer: 50 mM Tris-HCl, 10 mM reduced Glutathione, pH =8.0 in the elution buffer.

Handling Advice: Aliquot to avoid repeated freezing and thawing.

Storage: -80 °C

Storage Comment: Best use within three months from the date of receipt of this protein.

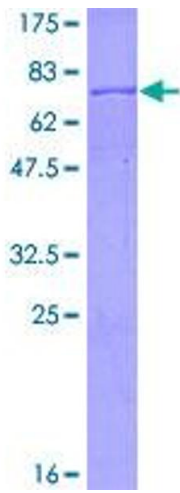


Image 1.