



Datasheet for ABIN1346529

BCKDHB Protein (AA 1-392) (GST tag)



[Go to Product page](#)

1 Image

Overview

Quantity:	10 µg
Target:	BCKDHB
Protein Characteristics:	AA 1-392
Origin:	Human
Source:	Wheat germ
Protein Type:	Recombinant
Purification tag / Conjugate:	This BCKDHB protein is labelled with GST tag.
Application:	ELISA, Western Blotting (WB), Antibody Array (AA), Affinity Purification (AP)

Product Details

Purpose:	BCKDHB (Human) Recombinant Protein (P01)
Sequence:	MAVVAAGW LLRLRAAGAE GHWRRLLPGAG LARGFLHPAA TVEDAAQRRQ VAHFTFQPDP EPREYGQTQK MNLFQSVTSA LDNSLAKDPT AVIFGEDVAF GGVFRCTVGL RDKYGKDRVF NTPLCEQGIV GFGIGIAVTG ATAI AEIQFA DYIFPAFDQI VNEAAKYRYR SGDLFNCGSL TIRSPWGCVG HGALYHSQSP EAFFAHCPGI KVVIPRSPFQ AKRLLLSCLIE DKNPCIFFEP KILYRAAAEE VPIEPYNIPL SQAEVIQEGS DVTLVAWGTQ VHVIREVASM AKEKLGVSCE VIDLRTIIPW DVDTICKSVI KTGRLLISHE APLTGGFASE ISSTVQEECF LNLEAPISRV CGYDTPFPHI FEPFYIPDKW KCYDALRKMI NY
Characteristics:	Human BCKDHB full-length ORF (AAH40139, 1 a.a. - 392 a.a.) recombinant protein with GST-tag at N-terminal.
Purification:	in vitro wheat germ expression system

Target Details

Target:	BCKDHB
Alternative Name:	BCKDHB (BCKDHB Products)
Background:	Gene: branched chain keto acid dehydrogenase E1, beta polypeptide Synonyms: E1B, FLJ17880, dJ279A18.1
Gene ID:	594

Application Details

Application Notes:	Optimal working dilution should be determined by the investigator.
Restrictions:	For Research Use only

Handling

Buffer:	50 mM Tris-HCl, 10 mM reduced Glutathione, pH =8.0 in the elution buffer.
Handling Advice:	Aliquot to avoid repeated freezing and thawing.
Storage:	-80 °C
Storage Comment:	Best use within three months from the date of receipt of this protein.

Images

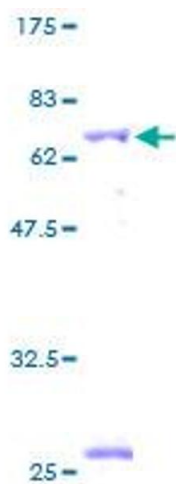


Image 1.