

Datasheet for ABIN1346552

BCL2L1 Protein (AA 1-233) (GST tag)



[Go to Product page](#)

1 Image

Overview

Quantity:	10 µg
Target:	BCL2L1
Protein Characteristics:	AA 1-233
Origin:	Human
Source:	Wheat germ
Protein Type:	Recombinant
Purification tag / Conjugate:	This BCL2L1 protein is labelled with GST tag.
Application:	Western Blotting (WB), ELISA, Antibody Array (AA), Affinity Purification (AP)

Product Details

Purpose:	BCL2L1 (Human) Recombinant Protein (P01)
Sequence:	MSQSNRELVV DFLSYKLSQK GYSWSQFSDV EENRTEAPEG TESEMETPSA INGNPSWHLA DSPAVNGATG HSSSLDAREV IPMAAVKQAL REAGDEFELR YRRAFSDLTS QLHITPGTAY QSFEQVVNEL FRDGVNWGRI VAFFSFGGAL CVESVDKEMQ VLVSRIAAWM ATYLNDHLEP WIQENGGWDT FVELYGNNAA AESRKGQERF NRWFLTGMTV AGVLLGSLF SRK
Characteristics:	Human BCL2L1 full-length ORF (AAH19307, 1 a.a. - 233 a.a.) recombinant protein with GST-tag at N-terminal.
Purification:	in vitro wheat germ expression system

Target Details

Target:	BCL2L1
---------	--------

Target Details

Alternative Name:	BCL2L1 (BCL2L1 Products)
Background:	Full Gene Name: BCL2-like 1 Synonyms: BCL-XL/S,BCL2L,BCLX,Bcl-X,DKFZp781P2092,bcl-xL,bcl-xS
Gene ID:	598
Pathways:	Apoptosis , Negative Regulation of intrinsic apoptotic Signaling

Application Details

Application Notes:	Optimal working dilution should be determined by the investigator.
Comment:	Preparation method: in vitro, wheat germ expression system Product Quality tested by: 12.5% SDS-PAGE Stained with Coomassie Blue.
Restrictions:	For Research Use only

Handling

Buffer:	50 mM Tris-HCl, 10 mM reduced Glutathione, pH =8.0 in the elution buffer.
Handling Advice:	Aliquot to avoid repeated freezing and thawing.
Storage:	-80 °C
Storage Comment:	Best use within three months from the date of receipt of this protein.

Images

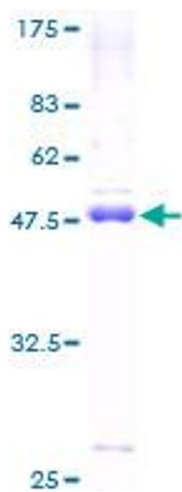


Image 1.