



[Go to Product page](#)

Datasheet for ABIN1346554

BCL2L10 Protein (AA 1-204) (GST tag)

1 Image

Overview

| | |
|-------------------------------|---|
| Quantity: | 10 µg |
| Target: | BCL2L10 |
| Protein Characteristics: | AA 1-204 |
| Origin: | Human |
| Source: | Wheat germ |
| Protein Type: | Recombinant |
| Purification tag / Conjugate: | This BCL2L10 protein is labelled with GST tag. |
| Application: | ELISA, Western Blotting (WB), Antibody Array (AA), Affinity Purification (AP) |

Product Details

Sequence: MVDQLRERTT MADPLRERTE LLLADYLGYC AREPGTPEPA PSTPEAAVLR SAAARLRQIH
 RSFFSAYLGY PGNRFELVAL MADSVLSDSP GPTWGRVVTL VTFAGTLLER GPLVTARWKK
 WGFQPRLKEQ EGDVARDCQR LVALLSSRLM GQHRAWLQAQ GGWDGFCHFF RTPFPLAFWR
 KQLVQAFLSC LLTTAFIYLW TRLL

Target Details

| | |
|-------------------|--|
| Target: | BCL2L10 |
| Alternative Name: | BCL2L10 (BCL2L10 Products) |
| Background: | Full Gene Name: BCL2-like 10 (apoptosis facilitator) Synonyms: BCL-B,Boo,Diva,MGC129810,MGC129811 |
| Gene ID: | 10017 |

Target Details

NCBI Accession: [NP_065129, NM_020396](#)

Pathways: [Positive Regulation of Endopeptidase Activity](#)

Application Details

Application Notes: Optimal working dilution should be determined by the investigator.

Comment: Preparation method: in vitro, wheat germ expression system
Product Quality tested by: 12.5% SDS-PAGE Stained with Coomassie Blue.

Restrictions: For Research Use only

Handling

Buffer: 50 mM Tris-HCl, 10 mM reduced Glutathione, pH =8.0 in the elution buffer.

Handling Advice: Aliquot to avoid repeated freezing and thawing.

Storage: -80 °C

Storage Comment: Store at -80 °C. Aliquot to avoid repeated freezing and thawing.

Expiry Date: 3 months

Images

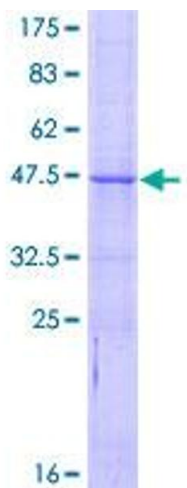


Image 1.