



[Go to Product page](#)

Datasheet for ABIN1346564

BCL2L12 Protein (AA 1-333) (GST tag)

1 Image

Overview

Quantity:	10 µg
Target:	BCL2L12
Protein Characteristics:	AA 1-333
Origin:	Human
Source:	Wheat germ
Protein Type:	Recombinant
Purification tag / Conjugate:	This BCL2L12 protein is labelled with GST tag.
Application:	ELISA, Western Blotting (WB), Antibody Array (AA), Affinity Purification (AP)

Product Details

Purpose:	BCL2L12 (Human) Recombinant Protein (P01)
Sequence:	MGRPAGLFPP LCPFLGFRPE ACWERHMQIE RAPSVPFLR WAGYRPGPVR RRGKVELIKF VRVQWRRPQV EWRRRRWGPG PGASMAGSEE LGLREDTLRV LAAFLRRGEA AGSPVPTPPS PAQEPTDFL SRLRRCLPCS LGRGAAPSES PRPCSLPIRP CYGLEPGPAT PDFYALVAQR LEQLVQEQLK SPPSPELQGP PSTEKEAILR RLVALLEEEA EVINQKLASD PALRSKLVRL SSDSFARLVE LFCSRDDSSR PSRACPGPPP PSPEPLARLA LAMELSRRVA GLGGTLAGLS VEHVHSFTPW IQAHGGWEGI LAVSPVDLNL PLD
Characteristics:	Human BCL2L12 full-length ORF (NP_001035758.1, 1 a.a. - 333 a.a.) recombinant protein with GST-tag at N-terminal.
Purification:	in vitro wheat germ expression system

Target Details

Target:	BCL2L12
Alternative Name:	BCL2L12 (BCL2L12 Products)
Background:	Full Gene Name: BCL2-like 12 (proline rich) Synonyms: MGC120313,MGC120314,MGC120315
Gene ID:	83596
NCBI Accession:	NM_001040668

Application Details

Application Notes:	Optimal working dilution should be determined by the investigator.
Comment:	Preparation method: in vitro, wheat germ expression system Product Quality tested by: 12.5% SDS-PAGE Stained with Coomassie Blue.
Restrictions:	For Research Use only

Handling

Buffer:	50 mM Tris-HCl, 10 mM reduced Glutathione, pH =8.0 in the elution buffer.
Handling Advice:	Aliquot to avoid repeated freezing and thawing.
Storage:	-80 °C
Storage Comment:	Best use within three months from the date of receipt of this protein.

Images

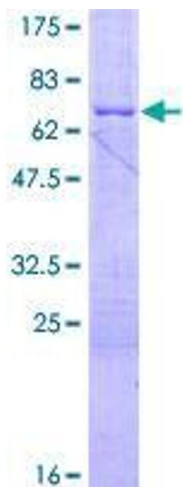


Image 1.