



[Go to Product page](#)

Datasheet for ABIN1346589

BCL7C Protein (AA 86-164) (GST tag)

1 Image

Overview

Quantity:	10 µg
Target:	BCL7C
Protein Characteristics:	AA 86-164
Origin:	Human
Source:	Wheat germ
Protein Type:	Recombinant
Purification tag / Conjugate:	This BCL7C protein is labelled with GST tag.
Application:	ELISA, Western Blotting (WB), Antibody Array (AA), Affinity Purification (AP)

Product Details

Sequence:	PLILLDLNDE NSNQSFHSEG SLQKGTEPSP GGTPQPSRPV SPAGPPEGVP EEAQPRLGQ ERDPGGITAG STDEPPMLT
-----------	--

Target Details

Target:	BCL7C
Alternative Name:	BCL7C (BCL7C Products)
Background:	Full Gene Name: B-cell CLL/lymphoma 7C Synonyms:
Gene ID:	9274
NCBI Accession:	NP_004756 , NM_004765

Application Details

Application Notes:	Optimal working dilution should be determined by the investigator.
Comment:	Preparation method: in vitro, wheat germ expression system Product Quality tested by: 12.5% SDS-PAGE Stained with Coomassie Blue.
Restrictions:	For Research Use only

Handling

Buffer:	50 mM Tris-HCl, 10 mM reduced Glutathione, pH =8.0 in the elution buffer.
Handling Advice:	Aliquot to avoid repeated freezing and thawing.
Storage:	-80 °C
Storage Comment:	Store at -80 °C. Aliquot to avoid repeated freezing and thawing.
Expiry Date:	3 months

Images

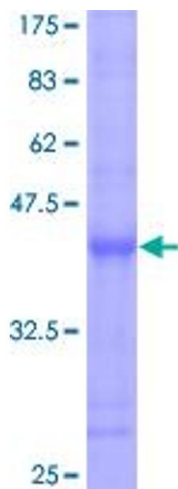


Image 1.