



[Go to Product page](#)

Datasheet for ABIN1346598

BCOR Protein (AA 1-1004) (GST tag)

1 Image

Overview

Quantity:	25 µg
Target:	BCOR
Protein Characteristics:	AA 1-1004
Origin:	Human
Source:	Wheat germ
Protein Type:	Recombinant
Purification tag / Conjugate:	This BCOR protein is labelled with GST tag.
Application:	Western Blotting (WB), ELISA, Antibody Array (AA), Affinity Purification (AP)

Product Details

Purpose:	BCOR (Human) Recombinant Protein (P01)
Sequence:	MLSATPLYGN VHSWMNSERV RMCGASEDRK ILVNDGDASK ARLELREENP LNHNVVDAST AHRIDGLAAL SMDRTGLIRE GLRVPGNIVY SSLCGLGSEK GREAAATSTLG GLGFSSERNP EMQFKPNTPE TVEASAVSGK PPNGFSAIYK TPPGIQKSAV ATAEALGLDR PASDKQSPLN INGASYLRLP WVNPMYEGAT PAIYPFLDSP NKYSLNMYKA LLPQQSYSLA QPLYSPVCTN GERFLYLPPP HYVGGHIPSS LASPMRLSTP SASPAIPPLV HCADKSLPWK MGVSPGNPVD SHAYPHIQNS KQPRVPSAKA VTSGLPGDTA LLLPPSPRPS PRVHLPTQPA ADTYSEFHKH YARISTSPSV ALSKPYMTVS SEFPAARLSN GKYPKAPEGG EGAQPVPGHA RKTAVQDRKD GSSPPLLEKQ TVTKDVTDKP LDLSSKVVDV DASKADHMKK MAPTVLVHSR AGSGLVLSGS EIPKETLSPP GNGCAIYRSE IISTAPSSWV VPGPSPNEEN NGKSMSLKNK ALDWAIPQQR SSSCPRMGGT DAVITNVSGS VSSAGRPASA SPAPANADG TKTSRSSVET TPSVIQHVGG PPATPAKHSS STSSKGAKAS NPEPSFKANE NGLPPSSIFL SPNEAFRSPP IPYPRSYLPY

Product Details

PAPEGIAVSP LSLHGKGPVY PHPVLLPNGS LFPGHLAPKP GLPYGLPTGR PEFVTYQDAL
GLGMVHPMLI PHTPIEITKE EKPERRSRSH ERARYEDPTL RNRFEILET SSTKLHPDVP
TDKNLKPNN WNQGKTVVKS DKL VYVDLLR EEPDAKTDN VSKPSFAAES VGQSAEPPKP
SVEPALQQHR DFIALREELG RISDFHETYT FKQPVFTVSK DSVLAGTNKE NLGLPVSTPF
LEPPLGSDGP AVTFGKTQED PKPFCVGSAP PSVDVTPTYT KDGADAEASN DGKVLKPKPS
KLAKRIANSA GYVGDRFKCV TTELYADSSQ LSREQRALQV SPPT

Characteristics: Human BCOR full-length ORF (NP_065977.1, 1 a.a. - 1004 a.a.) recombinant protein with GST-tag at N-terminal.

Purification: in vitro wheat germ expression system

Target Details

Target: BCOR

Alternative Name: BCOR ([BCOR Products](#))

Background: Full Gene Name: BCL6 co-repressor
Synonyms: ANOP2,FLJ20285,FLJ38041,KIAA1575,MAA2,MCOPS2,MGC131961,MGC71031

Gene ID: 54880

NCBI Accession: [NM_020926](#)

Application Details

Application Notes: Optimal working dilution should be determined by the investigator.

Comment: Preparation method: in vitro, wheat germ expression system
Product Quality tested by: 12.5% SDS-PAGE Stained with Coomassie Blue.

Restrictions: For Research Use only

Handling

Buffer: 50 mM Tris-HCl, 10 mM reduced Glutathione, pH =8.0 in the elution buffer.

Handling Advice: Aliquot to avoid repeated freezing and thawing.

Storage: -80 °C

Storage Comment: Best use within three months from the date of receipt of this protein.

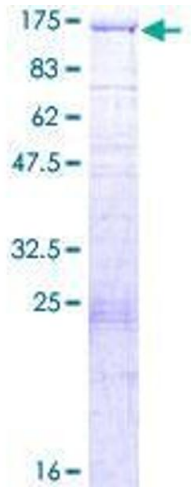


Image 1.