



[Go to Product page](#)

Datasheet for ABIN1346601

## BCORP1 Protein (AA 1-145) (GST tag)

### 1 Image

#### Overview

Quantity:	10 µg
Target:	BCORP1
Protein Characteristics:	AA 1-145
Origin:	Human
Source:	Wheat germ
Protein Type:	Recombinant
Purification tag / Conjugate:	This BCORP1 protein is labelled with GST tag.
Application:	ELISA, Western Blotting (WB), Antibody Array (AA), Affinity Purification (AP)

#### Product Details

Purpose:	BCORL2 (Human) Recombinant Protein (P01)
Sequence:	MKEKLSKKRA EVKGNRSWLE EFLKPSDNEE GPPPKNKVLS NNASSQKPTH SSCIPLLRLP DKQQKVNESI KTDMLCTDKE EECPAASLLQ KYTNNSEKPS GKRQCKTKHL ISQDLRQGFL LTGKCYVENA DGKIPLGTCTF LLGLI
Characteristics:	Human BCORL2 full-length ORF ( ENSP00000346742, 1 a.a. - 145 a.a.) recombinant protein with GST-tag at N-terminal.
Purification:	in vitro wheat germ expression system

#### Target Details

Target:	BCORP1
Alternative Name:	BCORL2 ( <a href="#">BCORP1 Products</a> )

## Target Details

Background: Full Gene Name: BCL6 co-repressor-like 2  
Synonyms: FLJ39821

Gene ID: 286554

## Application Details

Application Notes: Optimal working dilution should be determined by the investigator.

Comment: Preparation method: in vitro, wheat germ expression system  
Product Quality tested by: 12.5% SDS-PAGE Stained with Coomassie Blue.

Restrictions: For Research Use only

## Handling

Buffer: 50 mM Tris-HCl, 10 mM reduced Glutathione, pH =8.0 in the elution buffer.

Handling Advice: Aliquot to avoid repeated freezing and thawing.

Storage: -80 °C

Storage Comment: Best use within three months from the date of receipt of this protein.

## Images

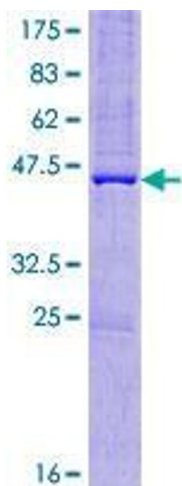


Image 1.