

Datasheet for ABIN1346607  
**BCS1L Protein (AA 320-418) (GST tag)**



[Go to Product page](#)

1 Image

Overview

Quantity:	10 µg
Target:	BCS1L
Protein Characteristics:	AA 320-418
Origin:	Human
Source:	Wheat germ
Protein Type:	Recombinant
Purification tag / Conjugate:	This BCS1L protein is labelled with GST tag.
Application:	ELISA, Western Blotting (WB), Antibody Array (AA), Affinity Purification (AP)

Product Details

Purpose:	BCS1L (Human) Recombinant Protein (Q01)
Sequence:	ASTEARIVFM TTNHVDRLDP ALIRPGRVDL KEYVGYCSHW QLTQMFQRFY PGQAPSLAEN FAEHLVRATN QISPAQVQGY FMLYKNPVG AIHNAESLR
Characteristics:	Human BCS1L partial ORF ( NP_004319, 320 a.a. - 418 a.a.) recombinant protein with GST-tag at N-terminal.
Purification:	in vitro wheat germ expression system

Target Details

Target:	BCS1L
Alternative Name:	BCS1L ( <a href="#">BCS1L Products</a> )

## Target Details

Background:	Full Gene Name: BCS1-like (yeast) Synonyms: BCS,BCS1,BJS,FLNMS,GRACILE,Hs.6719,PTD,h-BCS
Gene ID:	617
NCBI Accession:	<a href="#">NM_004328</a>
Pathways:	<a href="#">SARS-CoV-2 Protein Interactome</a>

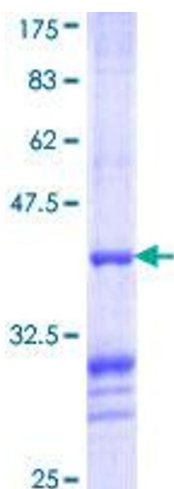
## Application Details

Application Notes:	Optimal working dilution should be determined by the investigator.
Comment:	Preparation method: in vitro, wheat germ expression system Product Quality tested by: 12.5% SDS-PAGE Stained with Coomassie Blue.
Restrictions:	For Research Use only

## Handling

Buffer:	50 mM Tris-HCl, 10 mM reduced Glutathione, pH =8.0 in the elution buffer.
Handling Advice:	Aliquot to avoid repeated freezing and thawing.
Storage:	-80 °C
Storage Comment:	Best use within three months from the date of receipt of this protein.

## Images



**Image 1.**