

Datasheet for ABIN1346654
BHLHA15 Protein (AA 75-140) (GST tag)



[Go to Product page](#)

1 Image

Overview

Quantity:	10 µg
Target:	BHLHA15
Protein Characteristics:	AA 75-140
Origin:	Human
Source:	Wheat germ
Protein Type:	Recombinant
Purification tag / Conjugate:	This BHLHA15 protein is labelled with GST tag.
Application:	ELISA, Western Blotting (WB), Antibody Array (AA), Affinity Purification (AP)

Product Details

Purpose:	BHLHB8 (Human) Recombinant Protein (Q01)
Sequence:	QRRLESNERE RQRMHKLNNA FQALREVIPH VRADKKLSKI ETLTLAKNYI KSLTATILTM SSSRLP
Characteristics:	Human BHLHB8 partial ORF (NP_803238.1, 75 a.a. - 140 a.a.) recombinant protein with GST-tag at N-terminal.
Purification:	in vitro wheat germ expression system

Target Details

Target:	BHLHA15
Alternative Name:	BHLHA15 (BHLHA15 Products)
Background:	Full Gene Name: basic helix-loop-helix family, member a15

Target Details

Synonyms: BHLHB8,MIST1

Gene ID: 168620

NCBI Accession: [NM_177455](#)

Application Details

Application Notes: Optimal working dilution should be determined by the investigator.

Comment: Preparation method: in vitro, wheat germ expression system
Product Quality tested by: 12.5% SDS-PAGE Stained with Coomassie Blue.

Restrictions: For Research Use only

Handling

Buffer: 50 mM Tris-HCl, 10 mM reduced Glutathione, pH =8.0 in the elution buffer.

Handling Advice: Aliquot to avoid repeated freezing and thawing.

Storage: -80 °C

Storage Comment: Best use within three months from the date of receipt of this protein.

Images

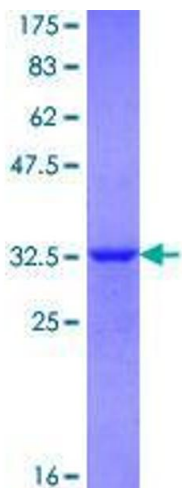


Image 1.