

Datasheet for ABIN1346656  
**BHLHB9 Protein (AA 1-547) (GST tag)**



[Go to Product page](#)

1 Image

Overview

Quantity:	25 µg
Target:	BHLHB9
Protein Characteristics:	AA 1-547
Origin:	Human
Source:	Wheat germ
Protein Type:	Recombinant
Purification tag / Conjugate:	This BHLHB9 protein is labelled with GST tag.
Application:	ELISA, Western Blotting (WB), Antibody Array (AA), Affinity Purification (AP)

Product Details

Purpose:	BHLHB9 (Human) Recombinant Protein (P01)
Sequence:	MAGTKNKTRA QAKTEKAAI QAKAGAAREA TGVVRPAKT RAKAKAKTGS KTDVAEMKA VSKNKVVAET KEGALSEPKT LGKAMGDFTP KAGNESTSST CKNEAGTDAW FWAGEEATIN SWFWNGEEAG NSFSTKNDKP EIGAQVCAEE LEPAAGADCK PRSGAEEEEEE ENVIGNWFWE GDDTSFDPNP KPVSRIKVPQ PVYEINEKNR PKDWSEVTIW PNAPAVTPAV LGFRSQAPSE ASPPSYIVLA SAEENACSLP VATACRPSRN TRSCSQPIPE CRFSDPCIQ TIDEIRRQIR IREVNGIKPF ACPCCKMECYM DSEEFKLVLS LLKSTTDPLI HKIARIAMGV HNVHPFAQEF INEVGVVTLI ELLSFPSPE MRKKTIVITLN PPSGDERQRK IELHVKHMCK ETMSFPLNSP GQQSGLKILG QLTTDFVHHY IVANYFSELF HLLSSGNCKT RNLVLKLLLN MSENPTAARD MINMKALAAL KLIFNQKEAK ANLVSGVAIF INIKEHIRKG SIVVVDHLSY NTLMAIFREV KEIETM
Characteristics:	Human BHLHB9 full-length ORF ( NP_085142.1, 1 a.a. - 547 a.a.) recombinant protein with GST-tag at N-terminal.

## Product Details

---

Purification: in vitro wheat germ expression system

## Target Details

---

Target: BHLHB9

Alternative Name: BHLHB9 ([BHLHB9 Products](#))

Background: Full Gene Name: basic helix-loop-helix domain containing, class B, 9  
Synonyms: KIAA1701,p60TRP

Gene ID: 80823

NCBI Accession: [NM\\_030639](#)

## Application Details

---

Application Notes: Optimal working dilution should be determined by the investigator.

Comment: Preparation method: in vitro, wheat germ expression system  
Product Quality tested by: 12.5% SDS-PAGE Stained with Coomassie Blue.

Restrictions: For Research Use only

## Handling

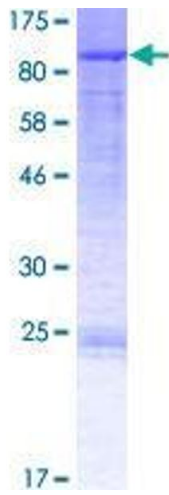
---

Buffer: 50 mM Tris-HCl, 10 mM reduced Glutathione, pH =8.0 in the elution buffer.

Handling Advice: Aliquot to avoid repeated freezing and thawing.

Storage: -80 °C

Storage Comment: Best use within three months from the date of receipt of this protein.



**Image 1.**