

Datasheet for ABIN1346754

BMP2 Protein (AA 231-330) (GST tag)[Go to Product page](#)**1** Image

Overview

Quantity:	10 µg
Target:	BMP2
Protein Characteristics:	AA 231-330
Origin:	Human
Source:	Wheat germ
Protein Type:	Recombinant
Purification tag / Conjugate:	This BMP2 protein is labelled with GST tag.
Application:	Western Blotting (WB), ELISA, Antibody Array (AA), Affinity Purification (AP)

Product Details

Purpose:	BMP2 (Human) Recombinant Protein (Q03)
Sequence:	AHLEEKQGVSKRHVRISRSLHQDEHSWSQIRPLLVTFGHDGKGHPLHKREKRQAKHKQRK RLKSSCKRHP LYVDFSDVGW NDWIVAPPGY HAFYCHGECF
Characteristics:	Human BMP2 partial ORF (NP_001191, 231 a.a. - 330 a.a.) recombinant protein with GST tag at N-terminal.
Purification:	in vitro wheat germ expression system

Target Details

Target:	BMP2
Alternative Name:	BMP2 (BMP2 Products)

Target Details

Background:	Full Gene Name: bone morphogenetic protein 2 Synonyms: BMP2A
Gene ID:	650
NCBI Accession:	NM_001200
Pathways:	Regulation of Hormone Metabolic Process , Regulation of Hormone Biosynthetic Process , Regulation of Muscle Cell Differentiation , Growth Factor Binding , Positive Regulation of fat Cell Differentiation

Application Details

Application Notes:	Optimal working dilution should be determined by the investigator.
Comment:	Preparation method: in vitro, wheat germ expression system Product Quality tested by: 12.5% SDS-PAGE Stained with Coomassie Blue
Restrictions:	For Research Use only

Handling

Buffer:	50 mM Tris-HCl, 10 mM reduced Glutathione, pH =8.0 in the elution buffer.
Handling Advice:	Aliquot to avoid repeated freezing and thawing.
Storage:	-80 °C
Storage Comment:	Best use within three months from the date of receipt of this protein.

Images

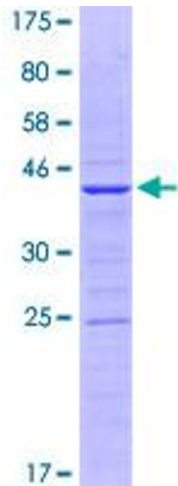


Image 1.