



[Go to Product page](#)

Datasheet for ABIN1346814

BOLA1 Protein (AA 1-137) (GST tag)

1 Image

Overview

Quantity:	10 µg
Target:	BOLA1
Protein Characteristics:	AA 1-137
Origin:	Human
Source:	Wheat germ
Protein Type:	Recombinant
Purification tag / Conjugate:	This BOLA1 protein is labelled with GST tag.
Application:	ELISA, Western Blotting (WB), Antibody Array (AA), Affinity Purification (AP)

Product Details

Purpose:	BOLA1 (Human) Recombinant Protein (P01)
Sequence:	MLSGRLVLGL VSMAGRVCLC QGSAGSGAIG PVEAAIRTKL EEALSPEVLE LRNESGGHAV PPGSETHFRV AVVSSRFEGL SPLQRHRLVH AALAEELGGP VHALAIQART PAQWRENSQL DTSPPCLGGN KKTGTP
Characteristics:	Human BOLA1 full-length ORF (NP_057158.1, 1 a.a. - 137 a.a.) recombinant protein with GST-tag at N-terminal.
Purification:	in vitro wheat germ expression system

Target Details

Target:	BOLA1
Alternative Name:	BOLA1 (BOLA1 Products)

Target Details

Background:	Full Gene Name: bolA homolog 1 (E. coli) Synonyms: CGI-143,MGC75015,RP11-196G18.18
Gene ID:	51027
NCBI Accession:	NM_016074

Application Details

Application Notes:	Optimal working dilution should be determined by the investigator.
Comment:	Preparation method: in vitro, wheat germ expression system Product Quality tested by: 12.5% SDS-PAGE Stained with Coomassie Blue.
Restrictions:	For Research Use only

Handling

Buffer:	50 mM Tris-HCl, 10 mM reduced Glutathione, pH =8.0 in the elution buffer.
Handling Advice:	Aliquot to avoid repeated freezing and thawing.
Storage:	-80 °C
Storage Comment:	Best use within three months from the date of receipt of this protein.

Images

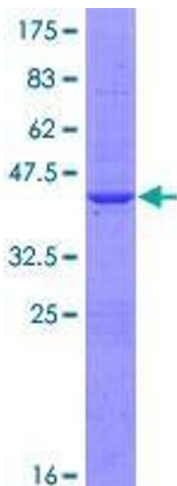


Image 1.